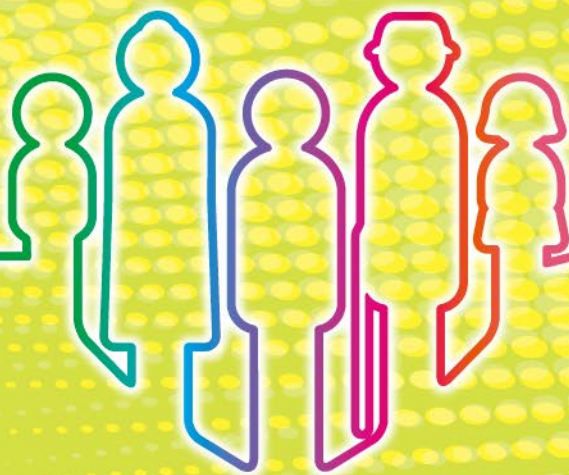




循道衛理中心

Methodist Centre



Mission & Care

實踐基督使命 • 關愛弱勢社群

2017-18年報
Annual Report

使命、願景、核心價值

MISSION, VISION, VALUES

使命 Mission

實踐基督使命，關愛弱勢社群。

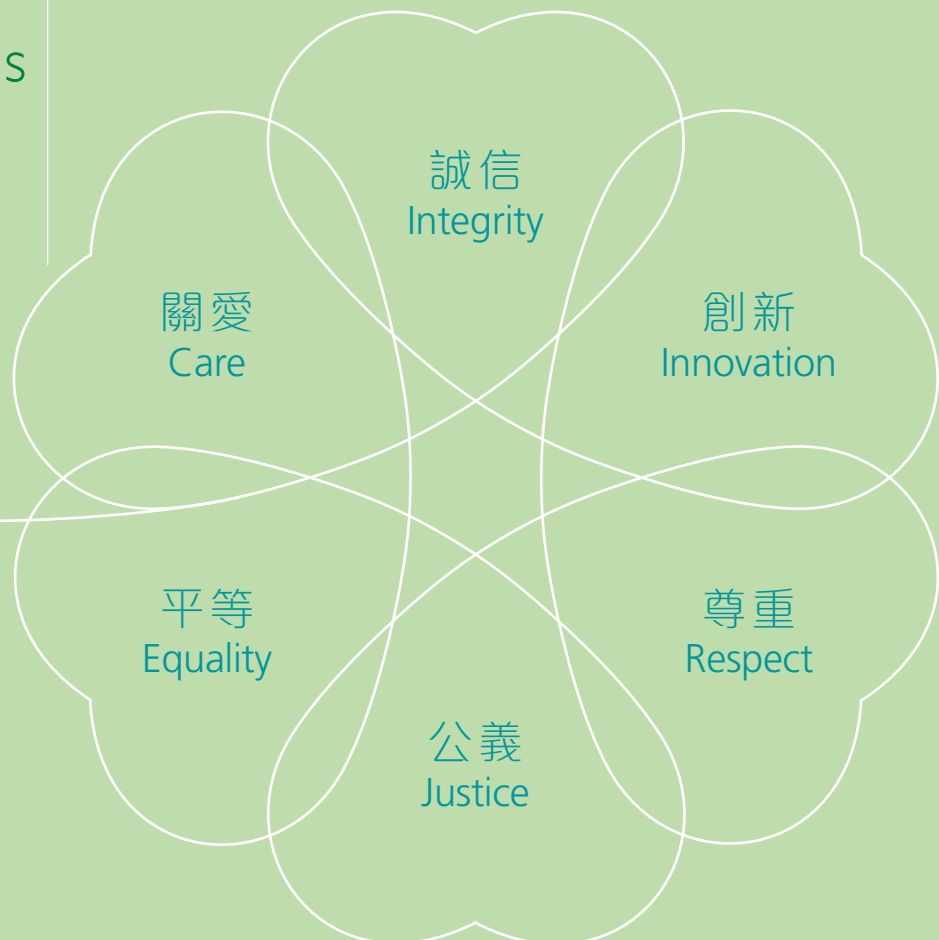
To live out the mission of Jesus Christ and to care about the disadvantaged groups.

願景 Vision

承傳耶穌基督服侍人的精神，建立關愛的社區和推動公義的社會。

To inherit the serving spirit of Jesus Christ, to build up a caring community and to facilitate a just society.

核心價值 Core Values



目錄

T A B L E O F C O N T E N T

歷史簡介 2
Brief History

主席的話 4
Message from Chairman

6 總幹事的話
Message from General Secretary

董事會及服務委員會 8
Board of Directors and Service Committees

組織架構圖 10
Organization Chart

12 職員名錄
Staff Members

服務報告 16
Service Report

49 機構活動
Agency Events

行政及人力資源管理 54
Administration & Human Resources Management

財務報告 58
Financial Report

64 服務單位
Service Units

鳴謝 68
Acknowledgements

歷史簡介

BRIEF HISTORY

本著耶穌基督憐愛世人、教會關心世界各地的需要，1927年，英國循道差會在灣仔興建一所「海陸軍人之家（又稱水手館）」，為離鄉別井之駐港英軍提供服務。半個世紀過去，駐港軍人數目減少，差會又透過香港循道衛理聯合教會及循道公會英語堂的代表組成管理委員會，推行本土的社會福利服務。於1980年10月成立循道衛理中心，是為香港循道衛理聯合教會屬下的社會服務機構之一。

綜觀本機構過往的歷史軌跡，簡述如下：

愛鄰如己，開展社會服務：

- 1981年，本機構自資舉辦青年活動，開始服務社區；
- 1983年接受政府撥款，成立首間兒童及青少年中心暨自修室服務；
- 2002年循道衛理鴨脷洲中心併入本機構，隨後合併成立綜合青少年服務。

關懷老弱，扶助弱勢無依：

- 1984年於灣仔成立外展老人服務，1994年延展至北角區；
- 1989年成立修頓老人中心和老人宣教服務；
- 1992年開創火鳳凰計劃；
- 1999年成立循道衛理灣仔長者地區中心，於2002年轉型為長者地區中心。

迎合社區，創立多元服務：

- 1989至1991年重建水手館及本機構灣仔總部；
- 陸續創設適切服務，包括：延伸教育服務、課餘託管服務、兒童及家庭支援服務、火鳳凰社區支援服務、更生青少年服務、輔導及就業綜合服務、再培訓課程、學校支援服務、康和服務等。

In view of the love of Jesus Christ and Church's care for the needs of the world, the Wesley Methodist Missionary Trust Society of England established a Sailors' and Soldiers' Home in Wan Chai in 1927. The Home was instituted to serve the British Armed Forces stationed in Hong Kong. In the 70's, the size of garrison was reduced. The Missionary Trust Society then started to provide social service for local people through the Management Committee formed by representatives of the Methodist Church, Hong Kong and the English Speaking Methodist Church. In October 1980, Methodist Centre was established as one of the social service organizations under the Methodist Church, Hong Kong.

Footprint of Methodist Centre:

A New Start of Serving the Community

- In 1981, the Centre started social services by organizing self-financed activities for the youth;
- In 1983, the first Children and Youth Centre and students' study room was established with government funding;
- In 2002, Methodist Ap Lei Chau Centre was integrated with the Centre and formed the Integrated Children and Youth Services.

Caring for the Old and the Weak

- In 1984, the Centre initiated an Outreaching Elderly Service in Wan Chai and extended to North Point in 1994;
- In 1989, Southorn Centre For The Elderly and Elderly Mission Service was launched;
- In 1992, Project Phoenix Community Support Service Scheme was initiated;
- In 1999, Wan Chai Methodist Centre For The Seniors was established and later upgraded to District Elderly Community Centre in 2002.

Innovative Services with Diversity

- During 1989 to 1991, the Sailors' and Soldiers' Home and Wan Chai Main Office was redeveloped;
- New service was launched to meet changing social needs, including Continuing Education Service, After School Care Service, Children & Family Support Service, Project Phoenix Community Support Service Scheme, Youth Rehabilitation Service, Counseling and Integrated Employment Services, Employees Retaining Courses, School Support Service, Project Concord and so on.

- 2007年合併青少年服務，成立愛秩序灣綜合青少年服務，火鳳凰計劃也被納入。

時代轉變，完成託付任務：

- 2007年結束衛蘭幼兒園，轉型為兒童及家庭支援服務；
- 2008年完成市區重建社工服務隊、2013年結束明華大廈重建社工隊、2015年完成駐屋宇署社工隊。
- 2009年將四個營舍交回總議會重修及管理；
- 2016年結束營運書室服務及青苗設計服務；
- 2017年結束社會企業約3:16餐廳。

回應需要，開展專業服務：

- 2008年成功投標改善家居及社區照顧服務(港島區)；
- 2009年成立循道衛理健樂軒；
- 2011年成功投標離院長者綜合支援計劃；
- 2013年成立循道衛理社區照顧中心(東區)；
- 2014年成立循道衛理盈智中心；
- 2016年成立循道衛理盈樂軒、銅鑼灣培訓中心；
- 2018年成立晴朗成長坊、康健坊、喜悅坊、樂藝坊、循道衛理聯合教會智樂軒、循道衛理中心柴灣辦事處及培訓中心。

總結而言，本機構服務多元化和專業化，服務對象涉及不同層面，包括老、中、青及幼，服務範圍由灣仔區擴展至全港島區，甚至其他區域，以實踐基督使命和關懷弱勢社群為使命。

- In 2007, children and youth services was merged and the Aldrich Bay Integrated Children and Youth Services was established, in which Project Phoenix was also included.

Service Enhancement to Meet Challenges

- In 2007, Wesley Day Nursery was closed and transformed to Children & Family Support Service;
- Urban Renewal Social Service Team, Ming Wah Building Redevelopment Project Social Service Team and Social Services Teams in Buildings Department completed its duty in 2008, 2013 and 2015 respectively;
- From 2009, the four camp sites were handed over to Conference Office for modernization and operation;
- In 2016, Bookroom Service and Green Design Service was ended;
- In 2017, the social enterprise, John 3:16 Café was closed.

Professional Services in response to Social Needs

- In 2008, the tender for Enhanced Home and Community Care Service (HK Cluster) was granted;
- In 2009, Methodist Kin Lok Centre was established;
- In 2011, the tender for Integrated Discharge Support Program for Elderly Patients was granted;
- In 2013, Methodist Community Care Centre (Eastern) was established;
- In 2014, Methodist Agile Mind Centre was established;
- In 2016, Methodist Rejoice Centre and Methodist Causeway Bay Training Centre were established;
- In 2018, Sunny Growth and Development Centre, Wellness Centre, Joy Centre, Art Centre, Methodist Church Wisdom Hub, Methodist Centre Chai Wan Office and Training Centre were established.

To conclude, we provide comprehensive and quality professional services which cover different aspects of the society from infants to elders, from Wan Chai to Hong Kong Island and other districts. It is our mission to live out the mission of Jesus Christ and to care about the disadvantaged groups.

主席的話

MESSAGE FROM CHAIRMAN



2017-2018是循道衛理中心展開新里程的一個年度，2017年4月1日委任黃民麗女士為總幹事，帶領機構專業團隊，邁向新的發展和路向，迎向未來挑戰。

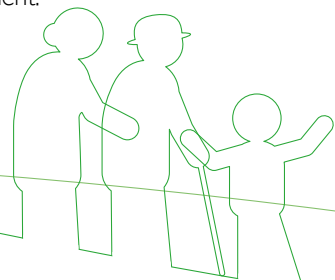
2017年5月機構理順非資助服務，調撥資源，以優化機構財務狀況及服務的持續性。首要，將兒童及家庭支援服務和學校支援服務重整人手和架構，重新調配資源和互相支援。再者，各部門資源共享，同心同行，結果帶來理想盈餘，令機構財政穩定下來，讓各部門和服務可以健康穩健地持續發展。

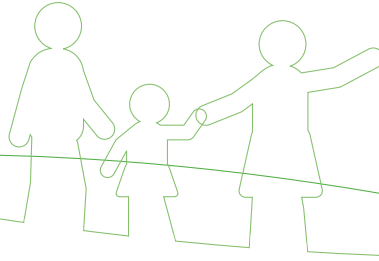
在本年度裡，董事會著力鞏固人力資源及財務的專業優質管理，並加強透明度和問責性，以提昇機構的管理和管治水平。故此，強化中央行政，成立人力資源部，加設人力資源及行政經理一職，與財務經理互相配搭，目標是優化人力資源、財務和資訊科技的政策和措施；同時，於2018年4月成立財務及審計委員會，大大增強對財務的管理和監察，讓機構管理和管治能與時並進，以滿足公眾、持份者和政府的期望和要求，並配合機構長遠專業發展。

The year of 2017-2018 had been a milestone for Methodist Centre. Ms Wong Man-lai, Cindy was appointed as the General Secretary from April 1, 2017, leading our Agency's professional team to have new development and encounter future challenges.

In May 2017, our Agency reallocated the resources of non-subservent service to strengthen its financial situation and service continuity. First, Children and Family Support Service and School Support Service were restructured for better resource allocation and mutual support. Furthermore, there was satisfying surplus owing to resource sharing and working as one team among different departments. The Agency's stabilized financial situation was beneficial to the continuous development of different departments and services.

The Board of Directors devoted much effort into the Agency's management and governance by consolidating human resources and financial management professionalism for transparency and accountability. To strengthen Central Administration, Human Resources Department was set up. A new post of Human Resources and Administrative Manager was added. Together with the Finance Manager, the whole Central Administration Department aimed to achieve human resources, finance and IT policies and measures betterment. In the meantime, Finance and Audit Committee was formed in April 2018. It significantly improved financial management and monitoring process to meet the expectation and requirement of the public, stakeholders and the Government and to fulfil the Agency's professional development.





董事會非常重視機構與同工的溝通，感謝主，過往一年，看到總幹事帥領團隊和眾同工上下一心，今年首次舉辦機構計劃日和機構使命日，聽取同工意見和建立雙向溝通，振奮團隊士氣，讓同工認定機構的使命，同心服務社會上有需要的群體，並實踐耶穌基督的使命。總結而言，同工十分欣賞機構這兩個活動聚會的安排，感受到同工的團結，機構關愛文化的承傳外，也讓同工反思生命，在工作上重新得力。

感謝主特別看顧循道衛理中心，機構過往雖然面對大大小小挑戰和轉變，仍能迎難而上，順利跨越種種的困難。在此，謹代表董事會，衷心感謝眾董事、委員、贊助和捐款人士及團體、合作伙伴、服務對象、義工及同工，與機構風雨同行和成長。展望將來，在主的恩典下，機構定必回應社會需要和轉變，持續地穩步發展，堅定承擔基督使命，服侍有需要群體和弱勢社群。願榮耀歸與天父。

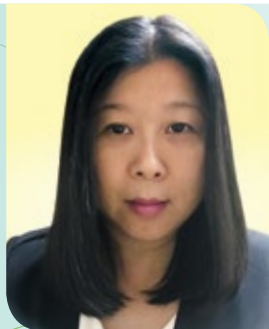
The Board of Directors valued the mutual communication between the management and the front-line staff. Thank GOD! The General Secretary led the team and all colleagues worked as one. The first-launched Agency Planning Day and Agency Mission Day provided a chance for management to hear different opinions, built mutual communication and improved team morale. The fellow colleagues affirmed the Agency's mission to serve the needy and live out the mission of Jesus Christ. In conclusion, they appreciated the events' arrangements that provided them a chance to feel the unity, inherit a caring culture, reflect their life and regain the energy of work in the team.

Thank GOD for looking after Methodist Centre especially when it faced different challenges and changes, it embraced and overcame hurdles. On behalf of Methodist Centre, I would like to express our heartfelt gratitude to the Board of Directors, all Service Committee Members, sponsors and donors, partnering organizations, service users, volunteers and fellow colleagues for walking with our Agency. In the future, with the care of GOD, our Agency will respond to social needs and changes, develop steadily, undertake the mission of Jesus Christ and serve the needy. May glory be to the LORD!

潘玉娟牧師 Rev POON Yuk Kuen
董事會主席 Chairman of the Board of Director

總幹事的話

MESSAGE FROM GENERAL SECRETARY



2017-2018是重要轉變和學習的年度，本人服務機構超過22年後，迎接一個全新的挑戰，正式擔任總幹事的職位，實在任重道遠。

回想2017-2018年度，工作報告總結如下：

- 1. 新管理團隊：**配合服務轉型，部門主管離任與榮休，管理團隊注入六位新部門主管，帶領不同專業服務，參與機構發展，實踐關愛使命。
- 2. 策略性計劃：**重新檢視機構的使命和願景，共建機構的方向。於2017年5月進行服務重組，包括：學校支援服務、兒童及家庭支援服務、延伸教育服務，加強服務效率、資源運用及互相支援，以應對機構財政狀況和長遠服務發展。此外，回應社區需要，2017年10月成立特殊教育需要服務（簡稱SEN）發展小組，整合四個部門的SEN服務，於2018年7月成立「晴朗成長坊」，提供跨專業服務。
- 3. 鞏固管理：**改革中央會計財務日常運作，開設人力資源部，加強資訊科技的水平，落實回應同工的建議，如總部全面安裝Wi-Fi系統等。另外，優化總部物業各樓層，如二樓大廳、三樓接待處及地庫樓梯等。多項工程順利完成，令服務質素得以提昇。

2017-2018 was the year marked by changes and learning. Having been serving Methodist Centre for over 22 years, it was a great honor for me to take up the post of General Secretary. It is a long road with challenges and heavy responsibilities.

By reviewing the year 2017-2018, service report was summarized as follows:

- 1. New Management Team:** 6 new service coordinators were joining the management team to cope with the service transformation and the resignation and retirement of former service coordinators. They would be responsible for leading different professional services, supporting the Agency's development and living out the mission of care.
- 2. Strategic Plans:** Mission and Vision of the Agency was reviewed. We developed Agency direction together. In May 2017, service restructure had been implemented in School Support Service, Children and Family Support Service and Continuing Education Service. It was to strengthen service effectiveness, resource utilization and mutual support so as to cope with the organizational finance and long-term service development. In October 2017, Special Educational Needs (SEN) Development Group was formed to integrate the SEN services provided by the 4 departments. Sunny Growth & Development Centre was established in July 2018 to provide cross-professional service.
- 3. Management Consolidation:** Daily operations of the Central Accounting and Finance was reformed; Human Resources Department was established; Information Technology was upgraded; Response was made to colleagues' suggestions such as installing Wi-Fi in the Headquarters. Moreover, environment in the Headquarters had been improved on the 2nd floor lobby, 3rd floor reception and basement staircase. Much renovation work had been completed and hence improved the service quality.

4. 改善財政：過去機構非資助單位財政緊張，在實施多項措施及策略下，2017-2018年度非資助單位錄得理想盈餘，機構財政逆轉，重回正軌。而資助單位方面，2017-2018整筆撥款及公積金儲備穩健，分別為\$11,152,965及\$4,638,283。董事會亦已通過於2018-2019年度，額外供款予所有非定影及非公積金同工的強積金戶口。

5. 團隊建立：首次舉辦「機構計劃日」及「機構使命日」，增加員工溝通，建立合一團隊和關愛文化。

6. 服務發展：成功再投得離院長者綜合支援計劃之東區醫院及律敦治醫院隊伍，三年服務合約。新服務/基金資助計劃包括：支援身體機能有輕度缺損的長者試驗計劃、康雲@健康計劃、先知先覺[®]認知障礙預防計劃、藝術夢·飛翔計劃、讀樂無窮、樂齡社區運動計劃、為愛護航計劃及更生青少年就業飛翔計劃。

7. 牧區合作：實踐循道衛理聯合教會宣教、學教教育及社會服務三結合的使命，分別與香港堂、北角堂、北角衛理堂、筲箕灣堂和鴨脷洲堂牧區合作。

感謝主的恩佑，感激董事會、委員會、合作伙伴、義工、服務對象和眾同工的支持，令本機構堅持提供優質、專業和以愛為本的服務，並穩步向前發展。

4. Improved Financial Performance: The financial condition of non-subservanted service used to be tight in the past. After implementing different measures and strategies, there was satisfactory surplus in the year 2017-2018. The Agency was recovered from financial setback. For subservanted service, Lump Sum Grant reserve and Provident Fund reserve were stable, which amounted to \$11,152,965 and \$4,638,283 respectively. The Board of Directors had also approved extra contribution to all Non-Snapshot and Non-Provident Fund staff's MPF accounts.

5. Team Building: 'Agency Planning Day' and 'Agency Mission Day' were first launched to facilitate staff communications, and to build a sense of unity and a culture of care.

6. Service Development: The contract of Integrated Discharge Support Program for Elderly Patients - Pamela Youde Nethersole Eastern Hospital and Ruttonjee Hospital was successfully renewed for 3 years. New service / funding schemes were launched, including Pilot Scheme on Home Care and Support for Elderly Persons with Mild Impairment, Kang Yun @ Health Plan, Active Prevention & Early Detection of Cognitive Impairment, Art Therapy for Dream - Project on Rehabilitated Youth, Reading Endless Joy, Aging Community Exercise Scheme, Love Convoy Project and Employment Skill Training Scheme on Rehabilitated Youth.

7. Integration with Parish District: 'Tri-integration' of Missionary, Education and Social Services was worked out by cooperating with Chinese Methodist Church Wan Chai, Chinese Methodist Church North Point, North Point Methodist Church, Sau Kei Wan Methodist Church and Ap Lei Chau Methodist Church.

Thank GOD for Your care. Thank the Board of Directors, Service Committee Members, collaborating partners, volunteers, service users and all fellow staff for your support. It kept our Agency to provide quality and professional service with love, hence steady development.



黃民麗 WONG Man Lai, Cindy
總幹事 General Secretary

董事會及服務委員會

BOARD OF DIRECTORS AND SERVICE COMMITTEES

(截至2018年11月 As at November 2018)

董事會名單 Members of Board of Directors

主席 Chairman	： 林崇智牧師 (至2017年9月19日止) 潘玉娟牧師 (由2017年9月20日起)
副主席 Vice-Chairman	： 潘玉娟牧師 (至2017年9月19日止) 林 津牧師 (由2017年9月20日起)
義務司庫 Hon. Treasurer	： 許祖愷先生
董 事 Members	： 陳偉文先生 趙麗娟女士 林偉強先生 羅頌明先生 梁偉昌先生 呂謝瑞衡女士 呂后賀先生 吳業立先生 黃文芝女士 余恩明牧師 范約翰先生 (至2017年6月30日止) 黎偉祥先生 (至2017年6月30日止) 林綺紅牧師 (至2017年6月30日止) 梁開健先生 (至2017年6月30日止) 湯煥榮先生 (至2017年6月30日止) 黃廣興先生 (至2017年6月30日止) 區煒培先生 (由2017年7月1日起) 卓迪舜會吏 (由2017年7月1日起) 呂啟雲先生 (由2017年7月1日起) 黎狄慈女士 (由2017年7月1日起) 李林美潔女士 (由2017年7月1日起) 李 蔭先生 (由2017年7月1日起) 袁國鴻先生 (由2017年7月1日起) 林崇智牧師 (由2017年9月20日起)
書 記 Secretary	： 黃民麗女士
列 席 In-attendance	： 陳兆璇女士 劉家玲女士

人事委員會 Personnel Committee

主席 Chairman	： 梁開健先生 (至2017年6月30日止) 潘玉娟牧師 (由2017年9月20日起)
委員 Members	： 呂謝瑞衡女士 吳業立先生 黃民麗女士 林偉強先生 (由2017年7月1日起) 袁國鴻先生 (由2017年7月1日起)
列 席 In-attendance	： 劉家玲女士

社區及青少年服務委員會 Community & Youth Service Committee

主席 Chairman	： 林 津牧師
委員 Members	： 陳德昌牧師 陳裕華先生 黎阮鳳儀女士 羅菊芳女士 羅建邦先生 施臻遠律師 涂伍婉儀女士 黃慧賢女士 黃民麗女士 張耀宏先生 (至2017年5月8日止) 劉建良牧師 (至2017年6月30日止) 林綺紅牧師 (至2017年6月30日止) 卓迪舜會吏 (由2017年7月1日起)

Rev Dr LAM Sung Che (End on September 19, 2017)
Rev POON Yuk Kuen (From September 20, 2017)
Rev POON Yuk Kuen (End on September 19, 2017)
Rev LAM Chun, Tim (From September 20, 2017)
Mr HUI Cho Hoi
Mr CHAN Wai Man, Ricky
Ms CHUI Lai Kuen, Ranis
Mr LAM Wai Keung, Patrick
Mr LAW Chung Ming, Ivan
Mr LEUNG Wai Cheong, Samuel
Mrs LUI TSE Sui Hang, Theresa
Mr LUI Hau Ho
Mr NG Yip Lap, Frederick
Ms WONG Man Chi, Cecilia
Rev YU Yan Ming, Alan
Mr FAN Yok Hon, John (End on June 30, 2017)
Mr LAI Wai Cheung, Paul (End on June 30, 2017)
Rev LAM Yee Hung, Christina (End on June 30, 2017)
Mr LEUNG Hoi Kin, Philip (End on June 30, 2017)
Mr TONG Won Wing (End on June 30, 2017)
Mr WONG Kwong Hing, Paul (End on June 30, 2017)
Mr AU Wai Pui, Chester (From July 1, 2017)
Rev CHEUK Dickson (From July 1, 2017)
Mr Vicente S KU (From July 1, 2017)
Ms LAI Dik Chee (From July 1, 2017)
Mrs LEE LIM Mei Kit, Evelyn (From July 1, 2017)
Mr LI Suen, David (From July 1, 2017)
Mr YUEN Kwok Hung, Philip (From July 1, 2017)
Rev Dr LAM Sung Che (From September 20, 2017)
Ms WONG Man Lai, Sindy
Ms CHAN Shiu Shuen, Berthis
Ms LAU Ka Ling, Janet

Mr LEUNG Hoi Kin, Philip (End on June 30, 2017)
Rev POON Yuk Kuen (From September 20, 2017)
Mrs LUI TSE Sui Hang, Theresa
Mr NG Yip Lap, Frederick
Ms WONG Man Lai, Sindy
Mr LAM Wai Keung (From July 1, 2017)
Mr YUEN Kwok Hung, Philip (From July 1, 2017)
Ms LAU Ka Ling, Janet

Rev LAM Chun, Tim
Rev CHAN Tak Cheong, Wilson
Mr CHAN Yue Wah
Mrs LAI YUEN Fung Yi, Charis
Ms LAW Gook Fong
Mr LAW Kin Bon
Ms Yantl SZE
Mrs TO NG Yuen Yee, Eva
Ms WONG Wai Yin, Wilma
Ms WONG Man Lai, Sindy
Mr CHEUNG Yiu Wang, Moses (End on May 8, 2017)
Rev LAU Kin Leung, Francis (End on June 30, 2017)
Rev LAM Yee Hung, Christina (End on June 30, 2017)
Rev CHEUK Dickson (From July 1, 2017)

委員 Members	: 梁慈光牧師 (由2017年7月1日起) 鄧穎琦醫生 (由2017年5月8日起)	Rev LEUNG Chi Kwong, Moses (From July 1, 2017) Dr Victoria W K TANG (From May 8, 2017)
列席 In-attendance	: 伍志珊女士 溫梓燦女士 翁建林先生	Ms NG Chi Shan, Claudia Ms WAN Tsz Ying, Peggy Mr YUNG Kin Lam, Gary

老人服務委員會 Elderly Service Committee

主席 Chairman	: 李炳光牧師, SBS	Rev Dr LI Ping Kwong, SBS
委員 Members	: 陳漢威醫生 陳麗明女士 詹兆洲先生 莊明蓮教授 周錦媚女士 何邦彥先生 關銳煊教授 黎陳倩敏女士 林 津牧師 梁綺雯博士 吳曾婉梨女士 黃中平律師 黃麗兒女士 黃民麗女士 邱吳詠珠女士 林綺紅牧師 (至2017年6月30日止) 梁慈光牧師 (由2017年7月1日起)	Dr CHAN Hon Wai, Felix Ms CHAN Lai Ming, Eleanor Mr CHIM Siu Chow, Samson Dr CHONG Ming Lin, Alice Ms CHOW Kam Mei Mr Douglas HO Prof KWAN Yui Huen, Alex Mrs LAI CHAN Sin Man, Astor Rev LAM Chun, Tim Dr Angela LEUNG Mrs NG TSANG Yuen Lee Mr WONG Chung Ping, Patrick Ms WONG Lai Yee Ms WONG Man Lai, Sindy Mrs YAU NG Wing Chu, Margaret Rev LAM Yee Hung, Christina (End on June 30, 2017) Rev LEUNG Chi Kwong, Moses (From July 1, 2017)
列席 In-attendance	: 梁鳳珊女士	Ms LEUNG Fung Shan, Becky

就業及延伸教育服務委員會 Employment & Continuing Education Service Committee

主席 Chairman	: 區煒培先生	Mr AU Wai Pui, Chester
委員 Members	: 陳周潤笑女士 陳偉文先生 趙麗娟女士 范約翰先生 高羅建英女士 李劉一葦女士 梁偉昌先生 黃祖權先生 黃民麗女士	Mrs CHAN CHOW Yun Siu Mr CHAN Wai Man Ms CHUI Lai Kuen, Ranis Mr FAN Yok Hon, John Mrs KO LAW Kin Ying, Anita Mrs LEE LAU Yat Wai, Vivian Mr LEUNG Wai Cheong, Samuel Mr WONG Cho Kuen, Simon Ms WONG Man Lai, Sindy
列席 In-attendance	: 鍾慧妍女士 高有強先生	Ms CHUNG Wai Yin, Christine Mr KO Yau Keung, Francis

財務及審計委員會 Finance and Audit Committee

(2018年4月1日成立)

(Established since April 1, 2018)

主席 Chairman	: 許祖愷先生	Mr HUI Cho Hoi
委員 Members	: 呂啟雲先生 李 蓀先生 潘玉娟牧師 黃民麗女士 袁國鴻先生	Mr Vicente S KU Mr LI Suen, David Rev POON Yuk Kuen Ms WONG Man Lai, Sindy Mr YUEN Kwok Hung, Philip
列席 In-attendance	: 陳兆璇女士	Ms CHAN Shiu Shuen, Berthie

循道衛理聯合教會智樂軒管理委員會 Methodist Church Wisdom Hub Management Committee

(2018年11月成立)

(Established since November 2018)

主席 Chairman	: 潘玉娟牧師	Rev POON Yuk Kuen
委員 Members	: 梁偉昌先生 李 蓀先生 呂后賀先生 吳達安先生 鄭琴淵女士 黃民麗女士 余黎秀萍女士	Mr LEUNG Wai Cheong, Samuel Mr LI Suen, David Mr LUI Hau Ho Mr NG Tat On, Anthony Dr TANG King Yung, Anna, BBS, MH Ms WONG Man Lai, Sindy Mrs YU LAI Sau Ping, Kitty
列席 In-attendance	: 賴兆麟先生 梁寶儀女士 鄧其偉會吏	Mr LAI Siu Lun, Nick Ms LEUNG Po Yi, Polly Rev TANG Kie Wai, Edwin

組織架構圖

ORGANIZATION CHART

(截至2018年11月 As at November 2018)



職員名錄 STAFF MEMBERS

(截至2018年3月31日 As at March 31, 2018)

總幹事 General Secretary

黃民麗女士 Ms WONG Man Lai, Sindy

部門主管 Unit Supervisors

陳兆璇女士	Ms CHAN Shiu Shuen, Berthis	梁鳳珊女士	Ms LEUNG Fung Shan, Becky
鍾慧妍女士	Ms CHUNG Wai Yin, Christine	伍志珊女士	Ms NG Chi Shan, Claudia
高有強先生	Mr KO Yau Keung, Francis	溫梓焯女士	Ms WAN Tsz Ying, Peggy
劉家玲女士	Ms LAU Ka Ling, Janet	翁建林先生	Mr YUNG Kin Lam, Gary

職員 Staff

歐卓茵女士	Ms AU Cheuk Yan, Phoebe	陳婉筠女士	Ms CHAN Yuen Kwan
# 區伊琪女士	Ms AU Elki	周春蝶女士	Ms CHAU Chun Tip
# 歐鳳嬌女士	Ms AU Fung Kiu	周祉丞先生	Mr CHAU Tsz Shing, Brian
區鳳萍女士	Ms AU Fung Ping	周逸女士	Ms CHAU Yat, Sunday
歐文康先生	Mr AU Man Hong	陳運燕女士	Ms CHEN Yun Yan
區穎雯女士	Ms AU Wing Man	鄭潔儀女士	Ms CHENG Kit Yee, Anna
陳志軒先生	Mr CHAN Chi Hin, Eric	鄭文慧女士	Ms CHENG Man Wai, Rae
# 陳淑貞女士	Ms CHAN Chuk Ching, Carmen	鄭靄瑩女士	Ms CHENG Oi Ying
陳凱貽女士	Ms CHAN Hoi Yee	鄭懿柔女士	Ms CHENGYi Yau
陳家琦女士	Ms CHAN Ka Kei	鄭亦灝先生	Mr CHENGYik Ho, Wisdom
# 陳嘉欣女士	Ms CHAN Ka Yan	卓可寧女士	Ms CHEUK Ho Ling, Konnie
# 陳劍媚女士	Ms CHAN Kim Mei	卓桂顏女士	Ms CHEUK Kwai Ngan, Simdy
陳潔儀女士	Ms CHAN Kit Yee	張洁麗女士	Ms CHEUNG Kit Lai
陳文慧女士	Ms CHAN Man Wai, Ellen	張淑婷女士	Ms CHEUNG Shuk Ting
陳美雲女士	Ms CHAN Mei Wan	張霆鋒先生	Mr CHEUNG Ting Fung, Dexter
陳美怡女士	Ms CHAN Mei Yee, Peggy	張偉美女士	Ms CHEUNG Wai Mei, Wymie
陳安兒女士	Ms CHAN On Yee	# 張惠明女士	Ms CHEUNG Wai Ming
陳栢欣女士	Ms CHAN Pak Yan, Yan	趙敏鳳女士	Ms CHIU Man Fung, Mandy
陳秀蘭女士	Ms CHAN Sau Lan, Bonnie	趙淑苓女士	Ms CHIU Shuk Ling
陳承聰先生	Mr CHAN Shing Chung	蔡家偉先生	Mr CHOI Ka Wai
陳瑞雲女士	Ms CHAN Shui Wan	蔡嬌女士	Ms CHOI Kiu
陳少蓮女士	Ms CHAN Siu Lin	蔡文偉先生	Mr CHOI Man Wai
陳淑芬女士	Ms CHAN Suk Fan	# 莊雲霞女士	Ms CHONG Wan Har
# 陳淑芬女士	Ms CHAN Suk Fun	周家輝先生	Mr CHOW Ka Fai
# 陳冬敏女士	Ms CHAN Tung Man, Donna	周美群女士	Ms CHOW Mei Kwan, Ivy
陳偉濤先生	Mr CHAN Wai To	# 周雪冰女士	Ms CHOW Suet Ping, Anita
陳永樑先生	Mr CHAN Wing Leung	周東合先生	Mr CHOW Tung Hop
陳燕儀女士	Ms CHAN Yin Yee, Chloe	周華勝先生	Mr CHOW Wah Shing

蔡媛儀女士	Ms CHOY Woon Yee	江采盈女士	Ms KONG Tsoi Ying
朱卓恩女士	Ms CHU Cheuk Yan, Karin	江煒琦女士	Ms KONG Wai Kei
# 朱志剛先生	Mr CHU Chi Kong	高淑敏女士	Ms KOO Suk Man, Manna
全勵寶女士	Ms CHUEN Lai Po	古燕玲女士	Ms KOO Yin Ling, Vicky
徐夢怡女士	Ms CHUI Mung Yee, Winnie	谷娟女士	Ms KUK Kuen
鍾鎧琪女士	Ms CHUNG Hoi Ki, Kiki	龔詠恩女士	Ms KUNG Wing Yan
鍾錦輝先生	Mr CHUNG Kam Fai	郭紹琳先生	Mr KWOK Siu Lam
# 鍾瑞梅女士	Ms CHUNG Shui Mui, Mable	鄺展新先生	Mr KWONG Chin San, Chris
鍾瑞平先生	Mr CHUNG Sui Ping	黎正然先生	Mr LAI Ching Yin
霍凱卉女士	Ms FOK Hoi Wai, Jojo	黎鳳英女士	Ms LAI Fung Ying, Cherie
霍燕珊女士	Ms FOK Yin Shan, Elsa	黎敏婷女士	Ms LAI Man Ting, Joyce
方彩鳳女士	Ms FONG Choi Fung	黎佩嫻女士	Ms LAI Pui Shan, Joanne
方錦霞女士	Ms FONG Kam Ha, Crystal	賴偉鵬先生	Mr LAI Wai Pang, Victor
方健貞女士	Ms FONG Kin Ching, Helah	黎婉薇女士	Ms LAI Yuen Mei, Carol
馮志明先生	Mr FUNG Chi Ming, Timmy	# 林楚雯女士	Ms LAM Cho Man, Sharan
馮妙琮女士	Ms FUNG Miu King	林嘉茵女士	Ms LAM Ka Yan
馮秀琮女士	Ms FUNG Sau King	# 林琮華女士	Ms LAM King Wah
馮芷瑩女士	Ms FUNG Tsz Ying, Gillian	林麗玲女士	Ms LAM Lai Ling, Lena
何志偉先生	Mr HO Chi Wai	林明灝先生	Mr LAM Ming Ho
何衍揚先生	Mr HO Hin Yeung	# 林秀君女士	Ms LAM Sau Kwan
何國權先生	Mr HO Kwok Kuen	林嬋花女士	Ms LAM Sim Far
何觀儀先生	Mr HO Kwun Yee, Can	林詩穎女士	Ms LAM Sze Wing
何乃榮先生	Mr HO Nai Wing, Terence	林添樂先生	Mr LAM Tim Lok, Victor
何寶兒女士	Ms HO Po Yee, Boey	林芷琪女士	Ms LAM Tsz Ki, Jessica
何淑君女士	Ms HO Suk Kwan, Idy	林詠翠女士	Ms LAM Wing Chui
何偉明先生	Mr HO Wai Ming	劉松春先生	Mr LAU Chung Chun
何韻祺女士	Ms HO Wan Ki, Patricia	劉美寶女士	Ms LAU Mei Po, Mabel
# 何韻雯女士	Ms HO Wan Man, Betsy	劉秉熹先生	Mr LAU Ping Hei
何泳熹女士	Ms HO Wing Hei	劉佩詩女士	Ms LAU Pui Sze, Kitty
孔御君女士	Ms HOONG Yu Kwan, Wendy	劉淑霞女士	Ms LAU SHUK Ha, Candy
禰麗華女士	Ms HUEN Lai Wa	柳道賢先生	Mr LAU To Yin
許少平先生	Mr HUI Siu Ping	劉滙珠女士	Ms LAU Wui Chu
# 許婷婷女士	Ms HUI Ting Ting	# 劉恩琪女士	Ms LAU Yan Ki
孔晞堯女士	Ms HUNG Hei Yiu	羅厚德先生	Mr LAW Hau Tak
洪敏菁女士	Ms HUNG Man Ching, Queenies	羅慶翹女士	Ms LAW Hing Kiu, Irene
# 葉麗萍女士	Ms IP Lai Ping, Becky	羅寶全先生	Mr LAW Po Chuen
高淑儀女士	Ms KO Shuk Yee	李菁怡女士	Ms LEE Ching Yi, Banita
江進恩女士	Ms KONG Chun Yan, Candice	李鳳卿女士	Ms LEE Fung Hing
江顯德先生	Mr KONG Hin Tak	李頌女士	Ms LEE Ki, Amanda

李潔芳女士	Ms LEE Kit Fong	馬蓮英女士	Ms MA Lin Ying
李美欣女士	Ms LEE Mei Yan, Vivian	馬思勤先生	Mr MA Sze Kan, Stephen
李兆康先生	Mr LEE Shiu Hong	麥承諾先生	Mr MAK Shing Nok, Matthew
李小燕女士	Ms LEE Siu Yin	# 麥婉玲女士	Ms MAK Yuen Ling, Polly
梁子傑先生	Mr LEUNG Chi Kit, Ken	萬振良先生	Mr MAN Chun Leung
梁俊傑先生	Mr LEUNG Chun Kit	莫群卿女士	Ms MOK Kwan Hing, Bronie
梁嘉偉先生	Mr LEUNG Ka Wai, Michael	吳志鋒先生	Mr NG Chi Fung, Michael
梁嘉穎女士	Ms LEUNG Ka Wing, Carni	伍翠敏女士	Ms NG Chui Man
梁錦輝先生	Mr LEUNG Kam Fai, Hugo	吳鎮權先生	Mr NG Chun Kuen
梁麗琮女士	Ms LEUNG Lai King, Ibbey	伍珈彥女士	Ms NG Ka Yin, Jody
梁文浩先生	Mr LEUNG Man Ho, Anson	# 吳錦華女士	Ms NG Kam Wa
梁敏慧女士	Ms LEUNG Man Wai	# 吳麗卿女士	Ms NG Lai Hing
梁明善女士	Ms LEUNG Ming Shin	吳麗君女士	Ms NG Lai Kwan
梁愛玉女士	Ms LEUNG Oi Yuk	伍麗蓮女士	Ms NG Lai Lin
梁寶儀女士	Ms LEUNG Po Yi, Polly	吳立雄先生	Mr NG Lap Hung, Vincent
梁聖邦先生	Mr LEUNG Shing Pong, Zachary	吳樂欣女士	Ms NG Lok Yan, Magli
# 梁少青女士	Ms LEUNG Shiu Ching	黃詩雅女士	Ms NG Sze Nga, Celia
# 李輝芳女士	Ms LI Fai Fong	吳穎瑤女士	Ms NG Wing Yiu
李玲女士	Ms LI Ling	# 吳綺芬女士	Ms NG Yee Fun
李雅怡女士	Ms LI Nga Yi, Natalie	吳燕卿女士	Ms NG Yin Hing, Helen
李秀花女士	Ms LI Sau Fa, Stacy	顏茵女士	Ms NGAN Yan
黎樹芬女士	Ms LI Shu Fan, Joan	王寶玲女士	Ms ONG Pao Ling
李詠敏女士	Ms LI Wing Man	# 柯清泉先生	Mr OR Ching Chuen
# 李婉玲女士	Ms LI Yuen Ling	彭虹先生	Mr PANG Hung
林芷楓女士	Ms LIM Tsz Fung	彭明麗女士	Ms PANG Ming Lai, Erica
練禮琛女士	Ms LIN Lai Sum	布麗琮女士	Ms PO Lai King, Jojo
凌美芳女士	Ms LING Meifang	潘錦雯女士	Ms POON Kam Man
羅雋永先生	Mr LO Chun Wing	潘穎萱女士	Ms POON Wing Huen
羅敏儀女士	Ms LO Man Yi	蕭悅興先生	Mr SIU Yuet Hing
# 勞世傑先生	Mr LO Sai Kit George Patrick	蘇佩玲女士	Ms SO Pui Ling
羅瑞華女士	Ms LO Sui Wah, Isobel	# 蘇少芳女士	Ms SO Shiu Fong
羅惠俊先生	Mr LO Wai Chun	蘇醒女士	Ms SO Sing
老穎熙先生	Mr LO Wing Hei	蘇詠嫻女士	Ms SO Wing Han
盧詠欣女士	Ms LO Wing Yan	蘇任重先生	Mr SO Yam Chung
盧少薇女士	Ms LOW Siu Mei, Peggy	# 孫貴枝女士	Ms SUEN Hadijah Siddiqi
羅海旋先生	Mr LU Hoi Suen	# 孫美賢女士	Ms SUEN Mei Yin
雷文堅先生	Mr LUI Man Kin, Ken	孫慧婷女士	Ms SUEN Wai Ting
# 陸美儀女士	Ms LUK Mee Yee	孫詠雅女士	Ms SUEN Wing Nga, Winky
陸慕娟女士	Ms LUK Mo Kuen	施曉茵女士	Ms SY Hiu Yan

施騰偉先生	Mr SZE Tang Wai	黃蘊聰女士	Ms WONG Wan Chung, Janet
# 譚嘉雯女士	Ms TAM Carmen	黃詠湘女士	Ms WONG Wing Sheung
譚正逸先生	Mr TAM Ching Yat	黃綺婷女士	Ms WONG Yee Ting
譚樂兒女士	Ms TAM Lok Yee, Kitty	# 黃綺涂女士	Ms WONG Yee To
譚思雅女士	Ms TAM Sze Nga	# 黃艷蘭女士	Ms WONG Yim Lan
# 譚翠琼女士	Ms TAM Tsui King	# 黃月芳女士	Ms WONG Yuet Fong, Jessie
鄧少芳女士	Ms TANG Siu Fong	黃玉蓮女士	Ms WONG Yuk Lin
田小芳女士	Ms TIN Siu Fong, Cherry	任啟超先生	Mr YAM Kai Chiu
唐啟添先生	Mr TONG Kai Tim	殷浩廷先生	Mr YAN Ho Ting, Thomas
曾俊傑先生	Mr TSANG Chun Kit	甄婉萍女士	Ms YAN Yuen Ping, Apple
曾淑嫻女士	Ms TSANG Suk Han, Hannah	楊紹娥女士	Ms YANG Shaoe
曾堯棠先生	Mr TSANG Yiu Tong	楊希同先生	Mr YEUNG Hei Tung
曾婉婷女士	Ms TSANG Yuen Ting, Cindy	楊家晞女士	Ms YEUNG Ka Hei
徐宇麒先生	Mr TSUI Yu Ki, Mark	楊家寶女士	Ms YEUNG Ka Po
# 溫正韜先生	Mr WAN Ching Tao, Bruno	楊栢寧先生	Mr YEUNG Pak Ning
溫偉健先生	Mr WAN Wai Kin	楊沛茹女士	Ms YEUNG Pui Yu
# 溫詠儀女士	Ms WAN Wing Yee	# 楊嫦女士	Ms YEUNG Sheung
溫婉芳女士	Ms WAN Yuen Fong, Winifred	楊映雪女士	Ms YEUNG Ying Suet
黃碧珊女士	Ms WONG Bik Shan	楊玉娟女士	Ms YEUNG Yuk Kuen
黃志好女士	Ms WONG Chi Ho, Manthus	易詩敏女士	Ms YICK Sze Man, Joyce
王帆崎先生	Mr WONG Fan Ki	# 葉振東先生	Mr YIP Chun Tung
黃家慧女士	Ms WONG Ka Wai, Charis	葉秀蘭女士	Ms YIP Sau Lan
# 黃嘉怡女士	Ms WONG Ka Yi	葉韻如女士	Ms YIP Wan Yu, Connie
黃敬傑先生	Mr WONG King Kit	# 姚麗雯女士	Ms YIU Lai Man, Carmen
黃敬然先生	Mr WONG King Yin, Edmund	# 余浩忠先生	Mr YU Ho Chung
黃靈峰女士	Ms WONG Ling Fung, Lemon	余啟榮先生	Mr YU Kai Wing, Adam
黃美丹女士	Ms WONG Mei Tan, Angel	茹雅倩女士	Ms YU Nga Sin
黃明慧女士	Ms WONG Ming Wai, Maggie	余小蓮女士	Ms YU Siu Lin
王雅麗女士	Ms WONG Nga Lai	余詩雅女士	Ms YU Sze Nga, Celia
# 黃佩琪女士	Ms WONG Pui Kei	袁彩君女士	Ms YUEN Choi Kwan
黃瑞卿女士	Ms WONG Shui Hing, Cally	阮嘉英女士	Ms YUEN Ka Ying, Jasmine
黃思蕊女士	Ms WONG Sze Yui	# 袁淑貞女士	Ms YUEN Shuk Ching, Miranda
王維萍女士	Ms WONG Wai Ping	容珪才女士	Ms YUNG Carene
黃慧森女士	Ms WONG Wai Sum, Joanna	# 翁龍嬌女士	Ms YUNG Lung Kiu
黃慧婷女士	Ms WONG Wai Ting, Renata	鄭志煒先生	Mr ZHENG Zhiwei
黃惠儀女士	Ms WONG Wai Yee, Monica	庄玲玲女士	Ms ZHUANG Ling Ling

293人 中心共有職員
Total no. of Staff

246人 全職員工
No. of Full-time Staff

47人 # 部份時間員工
No. of Part-time Staff



服務報告
SERVICE REPORT

中央行政部 CENTRAL ADMINISTRATION

總部修葺及優化工程

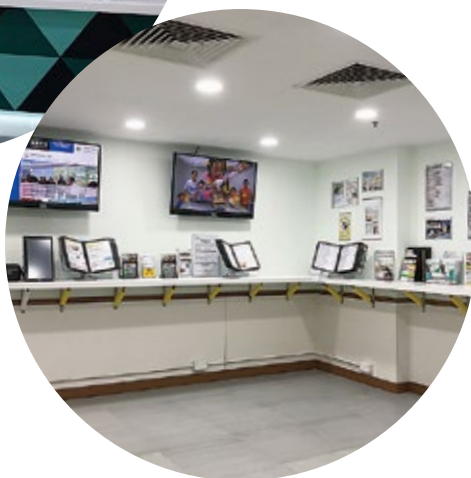
本中心持續推行優化項目，致力改善場地設施，為各服務使用者提供更優質及舒適環境，已完成項目包括：總部2樓大堂修葺工程—為課餘託管小童擴闊空間並同時引入更舒適場地供延伸教育課程使用；總部3樓接待處優化工程—提供更廣闊空間、引入電子化系統管理、提供實時課程資訊；新增設循道衛理康健坊—提供私隱度高之運動場所、打造婦女新天地；全中心鋪設Wi-Fi服務—提升教學素質，與時並進。

Headquarters Renovation and Optimization Project

We continued to implement optimization projects and strive to improve venue facilities in order to provide a more comfortable environment to all service users. The completed projects including renovation work on the 2nd floor lobby of the headquarters which expanded space for children after school care and provided an additional comfortable venue for adult interest courses. Second, the renovation work of the reception area on the 3rd floor of the headquarters introduced an electronic management system and provided course information in real time. Third, the newly established Methodist Wellness Centre provided high privacy sports venues for women. Lastly, the Wi-Fi service coverage throughout the center could highly improve the teaching quality.



總部3樓接待處
Reception at Headquarters'
3rd floor



循道衛理康健坊
Methodist Wellness
Centre



總部2樓活動室
Function Room at
Headquarters' 2nd Floor

員工福利

除關注服務使用者所需，中心同樣關顧中心最重要的資產—每一位同工，持續探討及引入不同員工福利以回饋員工付出。由2018年4月1日起，將各員工每年度醫療津貼上限提升至港幣\$1,000。同時，落實於2019年3月運用儲備及中心盈餘為服務滿5年、10年及15年同工強積金戶口注入額外供款以感謝各長期服務員工。

港島區賣旗籌款

本中心獲社會福利署批准於2017年6月17日(星期六)港島區賣旗籌款順利完成。在眾董事、委員、會友、同工及義工攜手努力下，共籌得港幣\$1,011,398.99。是次籌募所得的經費以津助愛秩序灣綜合青少年服務、循道衛理鴨脷洲家庭資源中心、兒童及家庭支援服務、循道衛理修頓老人中心、循道衛理健樂軒、循道衛理盈智中心、「愛長流」計劃長者生命關懷服務、更新青少年服務及中央行政。

Staff Benefit

Apart from concerning the needs of service users, Methodist Centre also paid attention to our most important assets – each and every staff member. By continuing to explore and introduce various employee benefits, the Centre was willing to offer the best working environment to its staff. With effect from April 1, 2018, the annual medical allowance for employees was raised to HK\$1,000. At the same time, it was approved the use of reserves and surpluses to inject additional contributions into the MPF account of the staff with 5, 10 and 15 years of service in March 2019 in order to thank the long-term service employees.

Regional Flag Day

Approved by the Social Welfare Department, the 2017 Regional Flag Day was completed on June 17, 2017 with support from our Board Members, Committee Members, Church Members, Staff and Volunteers, a total amount of HK\$1,011,398.99 was raised. The raised fund would be distributed to Aldrich Bay Integrated Children and Youth Service, Ap Lei Chau Family Resources Centre, Children and Family Support Service, Methodist Southern Centre for the Elderly, Methodist Kin Lok Centre, Methodist Agile Mind Centre, "Endless Love" Blissful Life Project, Youth Rehabilitation Service and Central Administration.



兒童及家庭支援服務 CHILDREN AND FAMILY SUPPORT SERVICE



康樂時間
Recreational Time

課餘託管服務

2017至2018年度，課餘託管人數平均每月有44人。除了功課輔導外，更舉辦成長小組、個人輔導、英語伴讀、親子及戶外活動，讓他們發展潛能，擴闊眼界。暑期託管服務，共有84參加者，在炎熱漫長的六星期，參與多姿多采的活動。

學前親子遊戲

學前親子遊戲班全年共開45班。由專業導師用心設計不同的課程，以促進幼兒身體、語言、認知、情緒及社交技巧的發展。

鴨脷洲家庭資源中心

鴨脷洲家庭資源中心為居住於南區的兒童及家庭提供以兒童為本的託管服務、親子活動、多元智能課程；為有需要的同學提供合宜的小組訓練，協助青少年認識自己、建立自我形象，發揮潛能，從而得到全面的發展。另外，本中心連續第三年與灣仔民政事務處合辦「青少年創意營商體驗計劃 – 創意年宵@灣仔」，目的提升營商技巧，擴闊青少年的眼界。

After School Care Service

In 2017-2018, an average of 44 children joined the After School Care Service each month. Besides tutorial guidance for the children, we also provided developmental groups, counseling, buddy reading, parent-child activities and outdoor activities, thereby assisting them to develop their potentials and broaden their horizons. In our Summer Holiday Care Service, we had 84 participants in total. They joined a variety of programs and activities throughout the 6 weeks of summer holiday.

Parent-kid Playgroup

This year, we had 45 classes of Parent-kid playgroups. Courses and programs were designed by professionals to stimulate children's physical, language, cognitive, emotional and social growth.

Ap Lei Chau Family Resources Centre

Ap Lei Chau Family Resources Centre provided children and family support service with child-centered concept in the Southern District, including after-school care classes, developmental groups and interest classes, in order to assist young people to understand themselves, build up their own image and develop their potentials, and eventually achieve comprehensive development. Ap Lei Chau Family Resources Centre co-organized with Wan Chai District Office in "Youth Entrepreneurship Experiential Day" for three consecutive years aimed at widening teenagers' horizons and experiencing business operation.



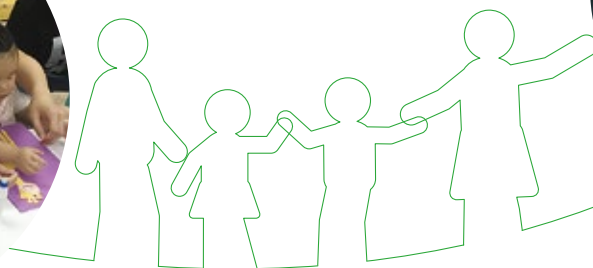
功課輔導
Homework Guidance

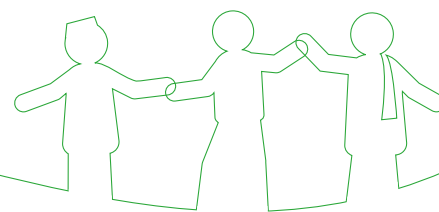


音樂英文班
Music English Class



親子日營
Parent-child Day Camp





服務數字 Service Statistics

課餘託管服務

After School Care Service

組別 Categories	參加人數 No. of Participants	出席人次 No. of Attendance
下午組 Afternoon Session	2	306
黃昏組 Evening Session	42	6,243
暫託組 Occasional Service	83	83
復活節託管 Easter Holiday Service	85	218
聖誕節託管 Christmas Holiday Service	68	192
農曆新年託管 Lunar New Year Holiday Service	70	270
暑期託管 Summer Vacation Service	84	2,386

學前親子遊戲班

Parent-kid Playgroups

上課地點 Venues	課程數目 No. of Courses	參加人數 No. of Participants
灣仔 Wan Chai	35	354
東區 Eastern District	10	89

鴨脷洲家庭資源中心

Ap Lei Chau Family Resources Centre

活動種類 Types of Service	課程 / 活動數目 No. of Courses/Programs	出席人次 No. of Attendance
課餘託管及功課輔導班 After School Care Service and Tutorial Classes	53	3,347
暑期託管 Summer Vacation Service	1	690
兒童興趣班及活動 Interest Classes and Programs (Kids)	93	2,371
成人興趣班及活動 Interest Classes and Programs (Adult)	12	170
兒童及青少年成長小組及訓練 Children & Youth Developmental Group and Training	7	116
義工活動及服務 Volunteer Activities	2	24
家庭活動 Family Activities	3	124
社區活動 Community Service	1	2,412
輔導服務 Counseling Service	1	6

潔心母親 / 課餘託管服務

我的孩子潔心，自幼兒時期便來到循道衛理中心上幼兒班，因此得悉中心有提供託管服務。數算一下，自小一開始，我的孩子已連續第三年參加循道衛理中心的課餘託管了！藉此機會，很想向這個服務致敬，衷心感謝循道衛理中心為小學生們提供託管服務，不但為他們提供了舒適及安全的環境做功課，而且老師們也會耐心地教導他們做好功課和學習，使我們作為家長的可以安心工作。真的，如果沒有此服務，我恐怕不能繼續全情投入地做好我的工作呢！

相信大家知道中心是一所基督教的服務機構，因此會特別關顧孩子的心靈需要，亦會教他們感恩和祈禱。中心的社工、導師、職員和義工都特別有愛心。而這也是我選擇此服務的原因之一。

另外，值得一提的就是除了功課輔導之外，中心還為孩子們提供不同類型的康樂活動，如乒乓球、康樂棋、足球機和多種桌上遊戲呢！有時我早放工到中心接放學，孩子竟然要求玩完才走呢！知道孩子能投入中心的生活，我倒感到十分欣慰！

其實中心提供的服務真的十分貼心，在長假期例如聖誕節、農曆新年、復活節和暑假都提供全日託管服務，又為孩子們細心安排一連串多姿多彩的課外活動和參觀，讓他們增廣見聞，並在各項群體活動中學習人際關係和溝通技巧。

除了家居和學校，中心可算是孩子的第三個家！但願他們好好珍惜在中心的美好時光，健康快樂地成長！



Kit Sum's mother / After School Care Service

My child, Kit Sum, attended playgroup in Methodist Centre. So, we knew about After School Care Service (ASCS). Kit Sum has joined ASCS since she studied Primary 1. Now that she is in Primary 3, that meant she has joined the service for 3 years. I would like to sincerely express my thankfulness to Methodist Centre through this page! The service provided a safe and comfortable environment for children. Staff and instructors were patient at work. They took good care of my child so that I could concentrate on my job. Without ASCS, I could not be a full-time working mother.

Methodist Centre is a Christian background organization, it focuses on the spiritual needs of service users. My child learned to pray and have a thankful heart. I saw that all peoples here, including social workers, instructors and volunteers, were very caring. This was one of the reasons I chose ASCS for Kit Sum.

Apart from homework guidance, ASCS rendered a variety of activities that catered social and recreational needs, such as table tennis, Chinese Billiard, football and different board games. Kit Sum enjoyed these activities after completing homework and revision.

I would also like to show my appreciation to the added value of ASCS. The service even provided whole-day after-school care in long school vacations in Christmas, Chinese Lunar New Year, Easter and Summer Holiday. Many programs, activities and visits were arranged to widen children's horizon, enhance social and communication skills.

To us, Methodist Centre was another home, besides school and family. I wished my child and all of her friends enjoyed moments in ASCS and kept growing healthily and happily.



愛秩序灣綜合青少年服務

ALDRICH BAY INTEGRATED CHILDREN AND YOUTH SERVICE

體貼會員需要、津助要求達標

是年度會員人數創新高，其他社會福利署津助要求也達標。按年青人的特性，常設班組、偶到服務、課餘託管、義工訓練、自修室和暑期活動。特色服務有「農的傳人計劃」：始於2012年，在中心平台開設農莊，讓會員家庭在城市進行耕種活動。

體貼弱勢為先、關愛照顧社群

綜合服務15年，年度主題為「身心靈健康」，帶出不同方面的健康信息。當中，非華裔人士、綜援及低收入家庭是重要和優先的對象，義務補習和師友計劃等，長年陪伴他們成長。社工更進入校園及在地區上推廣非華裔服務，達致關愛共融效果。

體貼互助資源、組織義工力量

中心組織不同年齡層的義工，10組恆常義工隊，除各自商討和推行義工活動外，更組成「義工聯席」，每年合辦大型活動和進行專題培訓。義工團隊如：民族手繪中國青年政府學院、親子雜耍隊等，成為中心另一特色。

體貼區內學童、強化支援合作

教育局撥款在中心和東區及灣仔7間中、小學推行區本計劃。同工在推行課後活動的同時，亦就青少年不同階段需要，探索及發展生涯規劃課題、特殊學習需要服務，鞏固及發展區內學校合作網絡。

Matching Services and FSA Being Done

All Funding Service Agreement requirements were met. Daily activities such as drop-in, After-School Care, volunteer service and Summer Programs were provided. Special Project named 'Heir of Farm' has been run since 2012 as to provide members space for Leisure City Farmers in our Platform.

Matching Needs and People Being Cared

Our Integrated Service came to the 15th anniversary. A three years' theme: Body, Mind and Spiritual Healthy was set to promote healthiness. Non-Chinese, Low Income and CSSA youngsters were our priorities. Promotion of Non-Chinese Services in schools and communities aimed at bringing harmony and mutual understanding in society.

Matching Volunteers and Love Being Shared

We have 10 Volunteer groups. Each of them had their own mode of operation. They helped us take care of the needy in the community. Volunteers' League was formed and annual service was done. Social workers organized trainings and activities for all of them. They contributed themselves and served others.

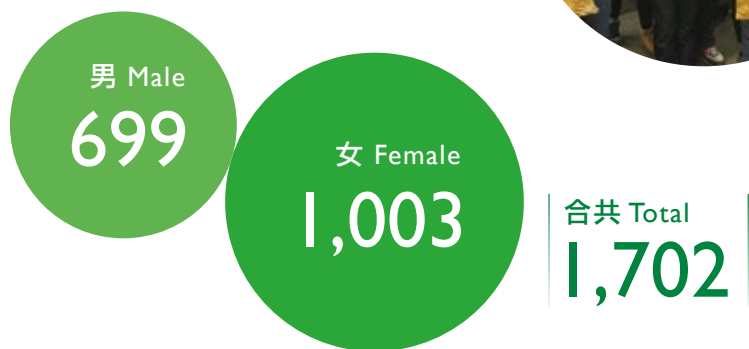
Matching Resources and Targets Being Helped

Education Bureau funded "School-based After-school Learning and Support Program" for 7 schools in Eastern and Wan Chai District. There were programs like career planning, Special Education Needs and tailor-made programs for schools in serving areas.



小畫家
Young Painters

服務數字 Service Statistics
會員數字 The Number of Members



親子廚餘紮染
Parent-Child in Action



野營
Wild Camp

年齡分佈 Age Distribution

14歲或以下 Aged 14 or Below	15-24歲 Aged 15 to 24	25歲以上 Aged 25 or Above	家長 Parent	合共 Total
689	481	148	384	1,702

活動統計 Program Statistics

性質 Nature	活動節數 Sessions	出席人次 Attendance
指導與輔導服務(小組及活動) Guidance and Counseling (Group and Activity)	65	1,866
指導與輔導(個案面談) Guidance and Counseling (Case Interview)	3,372	4,226
為身處貧窮環境的青少年提供支援服務 Supportive service for young people in disadvantaged circumstance	1,041	12,791
社群化服務 Socialization programs	1,329	14,523
培養社會責任感與發展 Development of social responsibility and competence	2,100	16,987
興趣 / 技能學習 Interest / skill learning	1,478	9,469
總數 Total	9,385	59,862



華師會非華裔友
Mentorship for Non-Chinese Kids

服務使用者心聲 LIFE STORY

Angel / 非華裔服務

我在中心10年了，最深刻是參加課餘託管。現在不再是託管班的學生，但仍然參加中心不同活動，接送弟妹到中心託管，或是在中心與朋友閒坐聊天，中心就像我的家，希望中心不變，姑娘要一直在這裡工作！

Bisma / 非華裔服務

從幼稚園開始參與中心活動到現在已經8年了，有15位親人現在亦參加中心活動。除課餘託管外，我也有參加中心的大小活動，例如：日營、升中面試預備、戶外活動、義工訓練等等。我亦於2014年加入Henna Beauty Team做手繪義工。在中心玩，讓我認識朋友、主動學習、熱心助人，希望中心可以有更多義工活動！

Angel / Non-Chinese Service

I had been member for 10 years. I was an After-school Care Service user. Then, I joined a variety of activities. ICY was another home of mine. Most of the time, I hanged around here with my siblings and friends. I hope the Centre and its workers could last forever.



Bisma / Non-Chinese Service

Our clan had 15 relatives having membership in ICY. I joined ICY when I was in kindergarten. To mention a few activities I had taken part, they included day camp, preparation class, outdoor programs and volunteer training. I even joined the Henna Beauty Volunteer Group in 2014 and learned Henna drawing. It was good for me to be here as I got acquainting to friends, learned different skills and helped people a lot. I wish I could join more volunteer activities.



火鳳凰社區支援服務計劃

PROJECT PHOENIX COMMUNITY SUPPORT SERVICE SCHEME

青少年抗逆活動與性教育

獲蘋果日報慈善基金贊助，各項提升青少年抗逆力的活動順利進行，當中青少年藉短片製作小組，向社區人士收集正能量的故事並剪輯成短片，於校園內播放；探訪流浪貓狗的義工活動亦讓青少年學習珍惜生命。此外，在衛生署「紅絲帶動力」愛滋病教育資助計劃的贊助下，本服務以不同手法向青少年提供一系列的性教育活動，其中亦曾藉電競活動與青少年討論網絡上的性文化。



火鳳凰籃球隊
Phoenix Basketball Team

Youth Resilience and Sex Education Programs

Through the generous sponsorship by Apple Daily Charitable Foundation, different resilience enhancement activities were successfully conducted. The youths collected from their community interviews, many encouraging life experience stories to share and learn from. The creative video-team took great effort to produce a video capturing those experiences which was aired on campus. Besides, through shared programs on animal group relations, teenagers knew how to handle day-to-day life and treasure life. Other than that, we also had the sponsors from the Department of Health "Red Ribbon in Action" AIDS Education Funding Scheme which funded a series of our sex education program. Our social workers discussed the changing sex culture and implications on the internet with youths through an electronic game activity.

家庭支援工作

除提供家庭輔導予個案外，同工定期舉辦小組及專題講座予家長，以支援家長在管教子女及個人情緒管理上的需要，當中邀請了中醫師向家長分享保健資訊，並透過青少年個案向家長分享與父母相處的經驗。



家長支援小組
Parents Support Group

Family Support Work

Apart from providing family counseling courses for participants, our social workers organized seminars with different topics for parents regularly to support them in their parenting and emotional needs. As an example, a talk relating to healthcare was conducted by a Chinese medicine practitioner and a teenager speaker was invited to share his personal views towards healthy family relations with the parents.

與警方協作

本服務於2017年11月18日與灣仔警區、灣仔區撲滅罪行委員會及其它團體合辦「社區共融齊滅罪、警民同心共創舉」活動，於社區內推廣滅罪訊息。此外，警察學院亦兩度邀請本服務同工，分別向初級警務人員及警長提供與「青少年輔導技巧」有關的訓練。同時，本服務亦定期探訪港島各區警司及青少年保護組的警員，以交流區內青少年犯罪情況。



探訪警司
Paid visit to the Police Superintendent

Cooperation with Police

With the purpose to promote anti-crime messages to the public, an Anti-crime Program was successfully co-organized on the 18th November, 2017 with the Wan Chai Division Police Station, District Fight Crime Committee (Wan Chai District), Methodist Centre and other parties. Besides, our team was invited twice by Hong Kong Police Force to provide trainings entitled "Youth in-need engagement and counseling skills" for junior policemen and sergeants. To reinforce the rapport and close contacts, we visited the Hong Kong Island Police Superintendents and kept contact with Police Officers from Juvenile Protection Section (JPS) regularly to share and update relevant information on the youth crime challenges and finding ways to resolve issues.



康和校園講座
Concord School Talk

康和校園服務

本服務於2017至2018年共獲不同中小學校邀請提供14場預防犯罪、校園欺凌及性教育講座，當中提供法律資訊並有火鳳凰個案分享轉變經歷。各場講座共超過2,700學生參加。

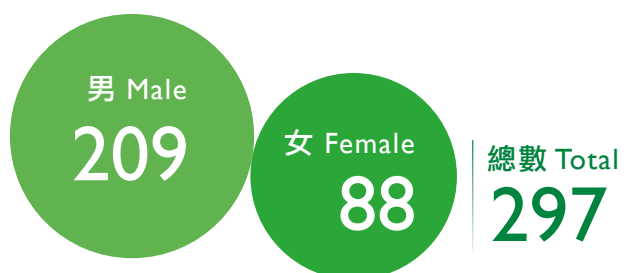
Concord School Service

Concord School Service was invited by different schools to provide 14 seminars with the theme of crime prevention, anti-bullying, and sex education during the year 2017-2018. The seminars provided the latest information on laws and a platform for the participants from Project Phoenix to share their life changing experiences. Over 2,700 students participated.

服務數字 Service Statistics

項目 Items	數字 Numbers
個案數字 No. of Cases	297
個案輔導節數 No. of Cases Interview Sessions	3,434
個案輔導人次 No. of Cases Interview Attendance	5,955
直接務總時數 No. of Direct Contact Hours	6,778
在跟進期間沒有重犯比例 Percentage of Cases Having No Re-offending Behavior During the Supervision Period	91.8%
在跟進期間繼續在學或工作比例 Percentage of Cases Resuming Studies/Securing Gainful Employment During the Supervision Period	98%

個案數字 Number of Cases



年齡分佈 Age Distribution

10-12歲 Aged 10 to 12	13-15歲 Aged 13 to 15	16-18歲 Aged 16 to 18
31	152	114



火鳳凰暑期活動閉幕禮 2017
Project Phoenix Summer Closing Ceremony 2017

Dorcas / 警司警誡令

我與火鳳凰的社工已經認識幾年了，從我住宿舍到現在搬出來獨立生活，過程中都有姑娘的同行。每天能夠穩定地上班、像普通的女生一樣追看韓劇、跟朋友一起逛街.....這可能對很多人而言是非常簡單的事，可是對從前的我而言，卻是不能想像的。

因著家庭的問題，我自高小開始便要居住在宿舍，一直以來的情緒和思想都很壓抑，結果那時候的我，在學校闖禍犯了盜竊罪，繼而獲警司警誡並接觸了火鳳凰社工。當時，我因受抑鬱症困擾，不願接聽任何人的電話，因此失去了不少朋友，可是姑娘跟我說：「沒關係，有動力再打給我好了！」感謝我的社工在我犯錯、患情緒病、失學的過程中，都一直在我身邊支持我。雖然我仍會面對不同的問題與挑戰，可是我已經不會像以前一樣那麼容易被打敗。如果沒有火鳳凰社工的幫助，大概也沒有現在成熟的我了，感謝你們！



Dorcas 參與火鳳凰義工活動
Dorcas participated in Project Phoenix Volunteer Activity

Dorcas / Police Superintendent Discretion

I had the opportunity to meet a social worker from Project Phoenix for a few years. She has been my mentor and provided me guidance from the time I stayed in the hostel to even after I moved out and lived independently. Most of the typical Hong Kong working girls would spend their time on watching Korean TV drama and hanging out with friends. But for me, these sort of free-lazy activities were impossible.

Due to the family problems and with a delinquent record, I had to live in hostel since primary school. My emotions and thoughts were severely suppressed. I had no one to talk to or seek guidance for. As a result, I committed theft in school and Police Superintendent Discretion was administered. During these periods, I suffered from depression and was unwilling to receive phone calls which made my friends stay further away from me. I felt so lonely and had neither friends nor relatives to turn to. The social worker had given me a warm encouragement, "It doesn't matter! Call me anytime when you are ready. I am around for you." I was so thankful for her unwavering support regardless of my many wrong doings, emotional problems and school dropout. With the support of this encouraging social worker and timely intervention, I believe that I have now grown much stronger and is confident to handle different challenges in the future. Without the support of the social worker, I would not be as mature as now.

更生青少年服務 YOUTH REHABILITATION SERVICE



欣曦足球隊隊員進行義工服務
Volunteer work of Renew Football Team

藝術夢飛翔計劃

本年度更生青少年服務得到循道衛理聯合教會社會服務發展專款贊助，於勵志更生中心、沙咀懲教所、歌連臣角懲教所及其他青少年院所的更生青少年舉辦正向學堂探訪。透過藝術治療讓他們重新發展和重塑自我，並向他們帶出正面訊息，當中亦包括防罪及禁毒的訊息。並於院所外舉辦不同的藝術體驗活動，例如自由繪畫體驗、塗鴉及音樂創作體驗，藉此發揮他們的內在潛能及促進與他人的互動。

就業飛翔計劃

違法青少年普遍於社會職場上競爭力不足，難以確立自己的職場路向，有部分更選擇重回舊路，恨錯難返。本計劃承蒙循道衛理聯合教會香港堂慈惠基金贊助，推行就業飛翔計劃。計劃期望支援曾違法的青少年而有意於職場上進修的一群，提升他們自身的競爭力，學習一門實用的技能，如裝修電器類工程或考取運輸署車輛牌照等，並能應用於工作當中，幫助他們職涯規劃。

欣曦足球隊

欣曦足球隊旨在透過專業足球及紀律訓練，讓一班邊緣青少年建立自信，積極投入社會。承蒙基隆茶餐廳贊助，欣曦足球隊於本年度參加了多場賽事。當中包括循道衛理聯合教會生命盃2017、香港街頭足球聯賽、「踢出我更生」足球四角賽等。

Art Therapy Project on Rehabilitated Youth

Through the sponsorship from Social Service Development Fund, Methodist Church Hong Kong, we organized art-oriented groups to visit the Lai Chi Rehabilitation Centre, Sha Tsui Correctional Institution, Cape Collinson Correctional Institution and Tuen Mun Children and Juvenile Home. These series of therapeutic art groups and programs aimed to reshape and redevelop the life aspirations of these rehabilitated youths. Our Program also included information about crime prevention and anti-drug message. The team also organized art activities outside the institution, such as art jamming program, volunteer work, graffiti workshop, innovative musical workshops to allow the teenagers to express themselves freely, bring out their hidden creative talent and facilitate their interaction with others.

Employment Skill Training Scheme

In reality, youngsters who often violated the law were generally disapproved by the society and typically disadvantaged in gaining employment and hence, unable to have stable career plans. Some of them even chose to recommit crime. To help these youngsters re-enter society as capable workers after passing through the reform training, the Employment Skill Training Scheme was established to help them to be equipped with the skill sets training. This scheme was sponsored by Chinese Methodist Church, Wan Chai, Hong Kong Charity Fund. It aimed to support the rehabilitated youth in equipping them with working skills and professional qualifications in order to increase their abilities and competitiveness. The Scheme also encouraged the youth-at-risk to study courses tied with professional skills training, professional license examination and other courses which could benefit them in their career path.

Renew Football Team

Renew Football Team (RFT) helped the youths build up their confidence and positive values through professional football training and discipline training. Through the sponsorship by Ki Lung Restaurant, RFT participated in many competitions during 2017-2018 including the Methodist Church Life Cup 2017, Hong Kong Street Soccer, Kick for New Life Invitation Cup and so on.



社工及導師與青少年分享創作心得
Sharing of social worker and mentor to the teenagers

服務數字 Service Statistics

活動性質 Program Nature	活動節數 No. of Activities	出席人次 No. of Attendance
小組活動 Group Activities	60	625
大型活動 Events	5	696
探訪沙咀懲教所 Sha Tsui Correctional Institution Visit	10	329
探訪勵志更生中心 Lai Chi Rehabilitation Visit	10	123
探訪歌連臣角懲教所 Cape Collinson Correctional Institution Visit	11	123
探訪屯門兒童及青少年院 Tuen Mun Children and Juvenile Home Visit	8	103
總計 Total	104	1,999

個案數字 No. of Cases	84
------------------------------	-----------



義工們參與藝術小組探訪
Art-oriented group held at Lai Chi Rehabilitation Centre and Sha Tsui Correctional Institution



青少年盡心教導長者
設計藝術禮物
Volunteer Work



踢出我更生足球邀請賽
留影
Photo taking on Renew Football Match

學校支援服務 SCHOOL SUPPORT SERVICE



紀律訓練
Discipline Training

發揮社工專長、支援全港小學

本專業團隊擁有 53 名註冊社工，協助小學師生建立輔導體系，締造理想的成長空間，讓他們在德、智、體、群、美各方面的潛能都得以發揮和發展。

小學全方位輔導服務

駐校社工協助全體教職員、家長及社會人士，為學生提供全面而專業的輔導服務，協助學生全人發展，而且促使他們能夠一生不斷自學、思考、探索、創新和應變，以面對成長路上的各項挑戰。2017 至 2018 年度，服務學校共 24 間。

成長的天空計劃（小學）

為小四至小六學生提供「發展課程」協助學生掌握面對逆境的知識、技能和態度，激勵他們積極面對成長中可能遇到的挑戰。2017 至 2018 年度，服務學校共 62 間。

額外的「學生輔導服務津貼」及「生命教育服務」

教育局用以補足及提升現有的輔導服務，以加強力度預防及處理可能在校內出現的學生問題。我們運用「繪本」幫助學童思考生命及豐富他們內在正面特質，從而建立健康的人生觀及處事態度。另外，更讓家長能夠成為學生閱讀的夥伴，享受親子共讀的樂趣。2017 至 2018 年度，服務學校共 27 間。



解說 Debriefing

Support Primary Schools with Professional Social workers

We were a team consisting of 53 Registered Social Workers and aiming at enlisting the collaboration of all school personnel to build a counseling system so as to maximize students' potential, develop their self-esteem and foster their development.

Comprehensive Student Guidance (Primary School)

Through close collaboration with all the staff, parents and members of the community, our social workers provided service to students in order to help them achieve whole person development and life-long learning. Moreover, support was given to students to help them develop their self-learning attitude, critical thinking skills, self-exploration, creativity and adaptability so as to meet life challenges. 24 schools were being served in the year 2017-2018.

Understanding Adolescent Project (Primary School)

Understanding Adolescent Project provided developmental and training programs for Primary 4 to 6 students to equip them with knowledge, skills and attitude to brace for adversities and to encourage them in face of potential challenges positively whilst they were growing up. 62 schools were being served in the year 2017-2018.

Top Up Student Guidance Service Grant and Life Education Service

The Grant aimed at effectively complementing and supplementing prevailing services according to students' needs and school-based circumstances so that stepped up efforts could be taken to prevent and handle student problems that might arise. We used picture books and held seminars, groups and workshops to promote life education among students and their parents. 27 schools were being served in the year 2017-2018.



講座 Talk

服務數字 Service Statistics

	服務對象數字 No. of Clients	活動數目 No. of Programs	活動節數 Sessions of Programs	出席總人次 Attendance
學生 Student	39,159	2,213	4,111	146,168
家長 Parents	12,550	223	300	13,373
教師 Teacher	2,609	26	27	2,286
總數 Total	54,318	2,462	4,438	161,827

個案數字 Case Statistics

項目 Items	數字 Number
個案數字 No. of Cases	435
個案輔導人次 No. of Cases Interview Attendances	7,484
諮詢輔導人次 No. of Consultation Cases	8,210
特殊學習需要諮詢人次 No. of SEN Consultation Cases	3,975

小學全方位輔導服務學校 Comprehensive Student Guidance (Primary)

1. 博愛醫院歷屆總理聯誼會梁省德學校	A.D. & F.D. P.O.H. Ltd. Leung Sing Tak School
2. 愛秩序灣官立小學	Aldrich Bay Government Primary School
3. 黃埔宣道小學	Alliance Primary School, Whampoa
4. 中華基督教會基法小學 (油塘)	C.C.C. Kei Faat Primary School (Yau Tong)
5. 丹拿山循道學校	Chinese Methodist School, Tanner Hill
6. 齋色園主辦可信學校	Ho Shun Primary School (Sponsored by Sik Sik Yuen)
7. 天神嘉諾撒學校	Holy Angels Canossian School
8. 九龍塘官立小學	Kowloon Tong Government Primary School
9. 獅子會何德心小學	Lions Clubs International Ho Tak Sum Primary School
10. 閩僑小學	Man Kiu Association Primary School
11. 五旬節于良發小學	Pentecostal Yu Leung Fat Primary School
12. 保良局馮晴紀念小學	P.L.K. Fung Ching Memorial Primary School
13. 保良局陳南昌夫人小學	P.L.K. Mrs. Chan Nam Chong Memorial Primary School
14. 嘉諾撒培德學校	Pui Tak Canossian Primary School
15. 嘉諾撒聖心學校	Sacred Heart Canossian School
16. 嘉諾撒聖心學校 (私立部)	Sacred Heart Canossian School, Private Section
17. 深水埗官立小學	Sham Shui Po Government Primary School
18. 筲箕灣官立小學	Shau Kei Wan Government Primary School
19. 培基小學	Stewards Pooi Kei Primary School
20. 道教青松小學 (湖景邨)	Taoist Ching Chung Primary School (Wu King Estate)
21. 天水圍官立小學	Tin Shui Wai Government Primary School
22. 將軍澳官立小學	Tseung Kwan O Government Primary School
23. 荃灣公立何傳耀紀念小學	Tsuen Wan Public Ho Chuen Yiu Memorial Primary School
24. 惇裕學校	Tun Yu School

成長的天空計劃 (小學) Understanding Adolescent Project (Primary)

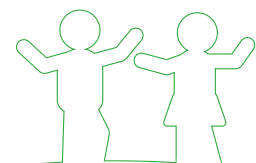
1. 博愛醫院歷屆總理聯誼會梁省德學校	A.D. & F.D. P.O.H. Ltd. Leung Sing Tak School
2. 愛秩序灣官立小學	Aldrich Bay Government Primary School
3. 大坑東宣道小學	Alliance Primary School (Tai Hang Tung)
4. 黃埔宣道小學	Alliance Primary School, Whampoa
5. 基督教神召會梁省德小學	Assembly of God Leung Sing Tak Primary School
6. 華德學校	Bishop Walsh School
7. 般咸道官立小學	Bonham Road Government Primary School
8. 嘉諾撒小學	Canossa Primary School
9. 香港嘉諾撒學校	Canossa School (Hong Kong)
10. 迦密梁省德學校	Carmel Leung Sing Tak School
11. 中華基督教會灣仔堂基道小學	CCC Wanchai Church Kei To Primary School
12. 丹拿山循道學校	Chinese Methodist School, Tanner Hill
13. 青松侯寶垣小學	Ching Chung Hau Po Woon Primary School
14. 祖堯天主教小學	Cho Yiu Catholic Primary School
15. 基督教香港信義會紅磡信義學校	ELCHK Hung Hom Lutheran Primary School
16. 方樹福堂基金方樹泉小學	F.S.F.T.F. Fong Shu Chuen Primary School
17. 五邑工商總會學校	Five Districts Business Welfare Association School
18. 葛量洪校友會黃埔學校	GCEPSA Whampoa Primary School
19. 軒尼詩道官立小學	Hennessy Road Government Primary School
20. 軒尼詩道官立小學 (銅鑼灣)	Hennessy Road Government Primary School (Causeway Bay)
21. 天神嘉諾撒學校	Holy Angels Canossian School
22. 香港浸信會聯會小學	Hong Kong Baptist Convention Primary School
23. 香島道官立小學	Island Road Government Primary School
24. 九龍灣聖若翰天主教小學	Kowloon Bay St. John The Baptist Catholic Primary School
25. 世界龍岡學校劉德容紀念小學	L.K.W.F.S. Ltd. Lau Tak Yung Memorial Primary School
26. 獅子會何德心小學	Lions Clubs International Ho Tak Sum Primary School
27. 閩僑小學	Man Kiu Association Primary School
28. 瑪利諾修院學校 (小學部)	Maryknoll Convent School (Primary School)
29. 北角官立小學 (雲景道)	North Point Government Primary School (Cloudview Road)
30. 北角衛理小學 (上午校)	North Point Methodist Primary School (AM)
31. 北角衛理小學 (下午校)	North Point Methodist Primary School (PM)
32. 保良局陳南昌夫人小學	PL.K. Mrs. Chan Nam Chong Memorial Primary School
33. 保良局田家炳小學	Po Leung Kuk Tin Ka Ping Primary School
34. 天主教博智小學	Price Memorial Catholic Primary School
35. 嘉諾撒培德學校	Pui Tak Canossian Primary School
36. 聖公會置富始南小學	S.K.H. Chi Fu Chi Nam Primary School
37. 聖公會奉基千禧小學	S.K.H. Fung Kei Millennium Primary School
38. 聖公會聖十架小學	S.K.H. Holy Cross Primary School
39. 聖公會嘉福榮真小學	S.K.H. Ka Fuk Wing Chun Primary School
40. 聖公會基德小學	S.K.H. Kei Tak Primary School
41. 聖公會聖馬太小學	S.K.H. St. Matthew's Primary School
42. 聖公會聖提摩太小學	S.K.H. St. Timothy's Primary School
43. 聖公會德田李兆強小學	S.K.H. Tak Tin Lee Shiu Keung Primary School
44. 聖公會天水圍靈愛小學	S.K.H. Tin Shui Wai Ling Oi Primary School
45. 聖公會將軍澳基德小學	S.K.H. Tseung Kwan O Kei Tak Primary School
46. 聖公會田灣始南小學	S.K.H. Tin Wan Chi Nam Primary School

47. 聖公會榮真小學	S.K.H. Wing Chun Primary School
48. 深水埗官立小學	Sham Shui Po Government Primary School
49. 筲箕灣崇真學校	Shaukiwan Tsung Tsin School
50. 筲箕灣官立小學	Shau Kei Wan Government Primary School
51. 聖文德天主教小學	St. Bonaventure Catholic Primary School
52. 培基小學	Stewards Pooi Kei Primary School
53. 太古小學	Taikoo Primary School
54. 大埔官立小學	Tai Po Government Primary School
55. 道教青松小學(湖景邨)	Taoist Ching Chung Primary School (Wu King Estate)
56. 勵志會梁李秀娛紀念小學	The Endeavourers Leung Lee Sau Yu Memorial Primary School
57. 救世軍中原慈善基金學校	The Salvation Army Centaline Charity Fund School
58. 天水圍天主教小學	Tin Shui Wai Catholic Primary School
59. 將軍澳官立小學	Tseung Kwan O Government Primary School
60. 荃灣官立小學	Tsuen Wan Government Primary School
61. 元朗公立中學校友會英業小學	Y.L.P.M.S. Alumni Association Ying Yip Primary School
62. 仁愛堂田家炳小學	Y.O.T. Tin Ka Ping Primary School

額外的「學生輔導服務津貼」Top Up Student Guidance Service Grant

- | | |
|-------------|---|
| 1. 軒尼詩道官立小學 | Hennessy Road Government Primary School |
| 2. 保良局田家炳小學 | Po Leung Kuk Tin Ka Ping Primary School |

繪本分享
Picture Book Sharing



紀律訓練
Discipline Training



繪本服務 / 到校服務 Picture Book and Life Education / School Support Service

1. 博愛醫院歷屆總理聯誼會梁省德學校	A.D. & F.D. P.O.H. Ltd. Leung Sing Tak School
2. 愛秩序灣官立小學	Aldrich Bay Government Primary School
3. 大坑東宣道小學	Alliance Primary School (Tai Hang Tung)
4. 華德學校	Bishop Walsh School
5. 中華基督教會基全小學	C.C.C. Kei Tsun Primary School
6. 中華基督教會基慧小學	C.C.C. Kei Wai Primary School
7. 嘉諾撒小學	Canossa Primary School
8. 青松侯賽垣小學	Ching Chung Hau Po Woon Primary School
9. 軒尼詩道官立小學 (銅鑼灣)	Hennessy Road Government Primary School (Causeway Bay)
10. 港大同學會小學	HKUGA Primary School
11. 天神嘉諾撒學校	Holy Angels Canossian School
12. 香港南區官立小學	Hong Kong Southern District Government Primary School
13. 薈色園主辦可信學校	Ho Shun Primary School (Sponsored by Sik Sik Yuen)
14. 寶血會伍季明紀念學校	Kwai-ming Wu Memorial School of The Precious Blood
15. 保良局蔡繼有學校	Po Leung Kuk Choi Kai Yau School
16. 保良局陳南昌夫人小學	PLK Mrs. Chan Nam Chong Memorial Primary School
17. 五旬節于良發小學	Pentecostal Yu Leung Fat Primary School
18. 嘉諾撒培德學校	Pui Tak Canossian Primary School
19. 聖公會置富始南小學	S.K.H. Chi Fu Chi Nam Primary School
20. 聖公會德田李兆強小學	S.K.H. Tak Tin Lee Shiu Keung Primary School
21. 聖公會將軍澳基德小學	S.K.H. Tseung Kwan O Kei Tak Primary School
22. 聖公會油塘基顯小學	S.K.H. Yautong Kei Hin Primary School
23. 筲箕灣循道衛理幼稚園	Shau Kei Wan Methodist Kindergarten
24. 大埔官立小學	Tai Po Government Primary School
25. 天水圍官立小學	Tin Shui Wai Government Primary School

服務使用者心聲 LIFE STORY



李日東 / 道教青松小學 (湖景邨)

非常多謝學校的社工為我安排不同的活動，例如義工服務、魔術小組、社交小組等，讓我學懂不同的知識及教我們如何面對困難，令我的生活得到改變。社工又不時跟我傾談，幫助我如何控制自己的情緒，與朋友建立良好的關係。非常多謝社工姑娘陪伴我成長！

LEE Yat Tung / Taoist Ching Chung Primary School (Wu King Estate)

Many thanks to the school social workers for organizing different activities for me such as volunteering services, magic groups and social skills training groups. I had learnt a lot in these groups so that I could overcome difficulties. Social workers sometimes talked with me so that I learnt to control my emotions as well as building up good relationship with others. I would like to thank them for accompanying with me.



老人服務 ELDERLY SERVICE

長者地區中心裝修

長者地區中心的裝修於2017年6月完工，中心於2018年6月19日重啟。為慶祝18周年及裝修後重新啟用，中心於2018年10月25日舉行十八周年慶典暨修繕竣工感恩會，與會員一起慶祝，共證主恩。

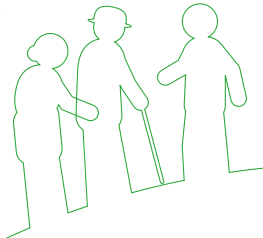
康雲健康監察服務

承蒙陳永錦博士，MH贊助，中心於2017年8月開展康雲健康監察服務，並於2017年8月5日假紀華利木球會舉行「康雲@健康計劃」開展禮。香港中文大學那打素護理學院為中心進行「康雲@健康計劃」遙距健康監察服務先導計劃，研究顯示實驗組的長者在參加計劃3個月後在自我管理的信心上有顯著的改善；而我們獲邀於2018年6月23日的港島東醫院聯網醫社合作研討會中分享具體的成效。



離院長者綜合支援計劃於東區醫院新辦公室啟用
IDSP New Office at Eastern Hospital

長者地區中心十八周年慶典暨修繕竣工感恩會
DECC 18th Anniversary Celebration cum Thanksgiving Day



「康雲@健康計劃」
健康檢查站
E-smart health station

Renovation of District Elderly Community Centre

The renovation of District Elderly Community Centre was completed in June 2017. The center was re-opened on June 19, 2017. The 18th Anniversary Celebration cum Thanksgiving Day was held on October 25, 2017 to share the joy and give thanks to our Lord.

E-smart Health Project

With the sponsorship of Dr. CHAN Wing Kam, MH, we started the "E-smart Health Project" in August 2017. The Launch Ceremony was held at the Craigengower Cricket Club on August 5, 2017. The Nethersole School of Nursing of the Chinese University of Hong Kong had conducted a study called "A pilot evaluation of a Tele health project on self-care management among community dwelling older adults with long term conditions". The study showed that elders in the experimental group had significant improvement in their confidence in self-management after a 3-month participation in the project. We were invited to share our experience on the "E-smart Health Project" and the study result in the 13th HKEC Symposium on Community Engagement held on June 23, 2018.



盈智計劃外展服務增強社區對
認知障礙症的認識
Outreaching Service to promote
awareness towards dementia

盈智認知障礙症服務計劃

計劃由循道衛理聯合教會社會服務發展專款資助，為期三年，已於2017年6月完成。此計劃為認知障礙症患者提供專業及多元化治療活動及服務，減慢退化的速度。計劃亦為照顧者提供訓練及支援，增強其照顧患者的信心，紓緩照顧上的壓力。同時亦推行了社區教育及外展服務，增強社區人士對認知障礙症的關注及認識，及早發現患有認知障礙症的長者，並安排檢測及治療。

Abundant Wisdom Dementia Care Project

The three-year “Abundant Wisdom Dementia Care Project” which was sponsored by the Social Service Development Fund of The Methodist Church, Hong Kong was completed in June 2017. The project targeted to provide professional and diversified treatment for people with dementia so as to slow down the rate of deterioration in cognitive functioning. It provided training and support for caregivers to enhance their confidence in taking care of the people with dementia as well as relieving their stress. Community educational programs and outreach service were also launched to enhance the awareness of people towards dementia and promote early detection, referral and treatment.

醫社合作

長者地區中心於2017年2月推行為期兩年的智友醫社同行先導計劃，以「醫社合作」模式，透過中心提供認知障礙症社區支援服務。食物及衛生局局長陳肇始教授於2017年11月2日到訪長者地區中心了解計劃的實施情況，並與參加計劃的長者交流。

Medical-Social Collaboration

In February 2017, the District Elderly Community Centre launched the Dementia Community Support Scheme which was a two-year pilot project. It aimed to provide dementia community support service through a medical-social collaboration model. On November 2, 2017, Professor Sophia CHAN Siu Chee, JP, Secretary for Food and Health had visited our centre to learn about the implementation of the scheme and talked with the service users.

離院長者綜合支援計劃自2011年起與律敦治醫院及東區醫院合作，為離院長者提供支援，我們於2017年9月再次提交標書，並成功投得未來一期的服務合約，新合約期為2018年4月1日至2021年3月31日。

Since 2011, we had been cooperating with Ruttonjee Hospital and Eastern Hospital to provide support for the discharged elderly patients under the Integrated Discharge Support Program. In September 2017, we were successfully granted the tender again. The new contract period is from April 1, 2018 to March 31, 2021.



食物及衛生局局長
陳肇始教授到訪長者
地區中心
Professor Sophia CHAN
Siu Chee, JP, Secretary
for Food and Health
visited DECC

服務數字 Service Statistics

長者地區中心

District Elderly Community Centre

長者會員數字 Elderly Membership

總會員數目 Total No. of Membership	2,904
60歲或以會員數目(截至2018年3月31日) No. of Membership Age 60 or above (Till March 31, 2018)	2,751
50-59歲會員數目(截至2018年3月31日) No. of Membership Age between 50-59 (Till March 31, 2018)	153
每月會員平均數目(60歲以上) Average Membership within this year (Age 60 or above)	2,326.58 (1000)
每節偶到服務出席率 Average Attendance per Session	136.63 (130)

輔導服務 Counseling Service (Remedial Services Conducted per year)

全年新啟個案 No. of New Cases	68
全年結束個案 No. of Closed Cases	60
每月平均個案 Monthly Average No. of Active Counseling Cases with Agreed Plan	233.33 (220)
個案結案率 Turnover Rate of Intensive Counseling Cases	21.28% (20%)
全年護老者服務數字 Total No. of Carers served	255 (230)

預防及發展性之小組及活動數字 No. of Preventive and Developmental Groups & Programs

滿足長者教育及發展性需要 To Meet Educational & Developmental Needs of Elders	427 (260)
義工發展及服務 Volunteer Recruitment, Development & Service	
滿足長者社交及康樂的需要 To Meet Social & Recreational Need of Elders	57 (40)

長者互助性活動及小組數目 No. of Mutual Support Groups & Programs

長者互助 Mutual Support Among Elders	64 (50)
護老者支援服務 Carer Support Service	60 (50)

補救性服務 Remedial Service

治療性小組數目 Total no. of Therapeutic Groups	5 (4)
支援長者鄰舍中心及長者服務單位之訓練活動 Percentage of Groups, Activities and Programs which were jointly held with Other Service Units or Strategic Partners	12 (12)
所有活動當中，長者參與策劃及推行之活動比例 Percentage of Groups, Activities and Programs for which Elder Members were involved in Planning and Implementation	38.82% (10%)

長者支援服務 Support Team for the Elderly

新接觸長者人次 No. of New Elderly Contacted	1,396 (1200)
獨居長者名單人數 No. of Living Alone Elderly served	1,022
已配對義工之長者 No. of Elderly Matched with Volunteers	631 (600)
義工機構數目 No. of Volunteer Organizations	61
義工總人數 Total No. of Volunteers	3,893
長者義工人數 Total No. of Seniors Volunteers	266
青少年義工人數 Total No. of Youth Volunteers	3,627
義工服務總次數 Total No. of Volunteers Service	4,454

隱蔽長者服務 Service for Hidden and Vulnerable Elders

新啟個案 Total No. of New Cases	7
結束個案 Total No. of Closed Cases	9
每月平均個案 Monthly Average No. of Active Counseling Cases with Agreed Plan	35 (35)
個案結案率 Turnover Rate of Intensive Counseling Cases	21.43% (20%)
建立地區伙伴網絡活動 No. of Activities of Building Up Rapport with Local Stakeholders for Service Promotion and/or Establishing Strategic Partnership	26 (12)

綜合家居照顧服務個案數字 (截至2018年3月31日)

No. of Cases of Integrated Home Care Service Team (Till March 31, 2018)

普通個案 Total No. of Ordinary Cases	76
體弱個案 Total No. of Frail Cases	10
服務數量 Total No. of Weighted Units	42,485

飯堂服務服務人次 No. of Attendance of Canteen Services

早餐 Breakfast	5,212
午餐 Lunch	20,212
晚餐 Dinner	16,704

改善家居及社區照顧服務 (港島區)

Enhanced Home and Community Care Services (HK Cluster)

個案總數字 (截至2018年3月31日) Total No. of Cases (Till March 31, 2018)	171
中度受損 Cases with Moderate Impairment Level	148
嚴重受損 Cases with Severe Impairment Level	23
新啟個案 Total No. of New Cases	6
結束個案 Total No. of Closed Cases	7

長者地區中心老人宣教

Elderly Mission Service in DECC

長者洗禮 Baptism

類別 Type	禮人數 No. of Persons	加入教會 Church Joined
聖誕節教會洗禮 Christmas Baptism	3	循道衛理聯合教會香港堂 Chinese Methodist Church, Wan Chai, HK

活動 Programs

活動名稱 Name of Activities	舉辦次數 Frequency	出席人次 No. of Attendance
長者崇拜 Elderly Services	49	2,450
金色年華 The Golden Ages	48	2,496
讚美操 Praising Dance	48	624
長青福音粵曲班 Evergreen Gospel Chinese Opera Choir	48	1,104
耆樂無限敬拜隊 Elderly Worship Team	42	420
福音旅行 Evangelistic Crusades Programme	1	58
宣教幹事探訪 Visit by Parish Worker	26	35
長者義工隊 Elderly Volunteer Team	7	50
總數 Total	269	7,237

循道衛理健樂軒
Kin Lok Centre

會員數字 No. of Membership

男性 Male	女性 Female	合共 Total
86	399	485

服務數字 Statistics of Service

類別 Types	服務人次 No. of Attendance
偶到人數 Total No. of Attendance of Drop-in Services :	10,153
身體健康系列 Physical series :	
運動班 Exercise Classes	6,920
健康講座 Health Education	1,131
健康檢查、諮詢及評估 Health Assessment	1,177
第五期「先知先覺」認知障礙預防計劃 Active Prevention & Early Detection of Cognitive Impairment 5	364
心理健康及社交系列 Psycho-social series :	
興趣學習 Educational Programs	620
社交康樂 Social Recreation Programs	339
跨代活動 Inter-generation Programs	602
中心專題例會 General Meeting of Members	1,447
節日活動 Festival Special Programs	259
義工小組 / 活動 Volunteer Group / Activities	194
關懷探訪 Concern Home Visits	596
總服務人次 Total:	23,802

健樂軒長者日間暫託服務
Elderly Day Care Service in Kin Lok Centre

類別 Types	服務人數 No. of Elders served
個案數字 No. of Cases	9
長者社區照顧服務券 No. of Voucher Cases	8
日間照顧服務人次 No. of Attendance in Day Care Service	857

健樂軒宣教服務
Elderly Mission Service in Kin Lok Centre

活動名稱 Name of Activities	舉行次數 Frequency	出席人次 No. of Attendance
恩慈組長者團契 Gentle Elderly Fellowship	46	1,449
讚美操班組 Praise Dancing Class	24	229
查經小組 Bible Class	10	57
頌讚詩歌分享 Hymns Sharing	36	492
健樂軒「活水甘泉」2017 Living Water Program	6	126
筲箕灣堂敬老主日 Methodist Shaukeiwan Church Elderly Worship Day	1	120
總數 Total	123	2,473

離院長者綜合支援計劃 Integrated Discharge Support Program for Elderly Patients

新啟個案 No. of New Cases	1,080
結束個案 No. of Closed Cases	1,084
全年過渡性院舍住宿使用個案 No. of Cases Receiving Transitional Residential Care Services	49
全年照顧者培訓人次 No. of Attendance of Carer Training	1,004

類別 Types	服務人數 No. of Elders served
基本護理 Simple Nursing Care	593
專業護理 Professional Nursing Care	85
個人照顧 Personal Care	46
到戶看顧 Elderly Sitting Services	3
家居復康治療及運動 Home Rehabilitation	248
家居清潔 Home-making Services	50
家居環境改善 Home Modifications	247
膳食服務 Provision of Meals	482
陪診及護送服務 Transportation and Escort Services	162
轉介服務 Referral to Social Services	257
日間暫託 Residential/Centre-based Respite Services	59
電話接觸及跟進 Telephone Contacts and Follow up	5,363 人次
非辦公時間電話諮詢及支援 Number of Calls Received for Out-of-office-hour Emergency Support from Patients/Carers	20 人次
輔導服務 Number of Counseling Sessions	1,990 人次

循道衛理社區照顧中心(東區) (2017年4月至2018年3月) Methodist Community Care Centre (Eastern) (April 2017 to March 2018)

類別 Types	服務人數 No. of Elders Served
個案數字 No. of Cases	46
長者社區照顧服務券 No. of Voucher Cases	37
日間照顧服務人次 No. of Attendance in Day Care Service	2,910

循道衛理盈智中心 (2017年4月至2018年3月) Methodist Agile Mind Centre (April 2017 to March 2018)

類別 Types	服務人數 No. of Elders Served
個案數字 No. of Cases	26
日間照顧服務人次 No. of Attendance in Day Care Service	1,884

循道衛理盈樂軒 (2017年4月至2018年3月) Methodist Rejoice Centre (April 2017 to March 2018)

類別 Types	服務人數 No. of Elders Served
個案數字 No. of Cases	31
長者社區照顧服務券 No. of Voucher Cases	36
日間照顧服務人次 No. of Attendance in Day Care Service	4,792

服務使用者心聲 LIFE STORY



黃先生 / 生命關懷計劃

太太去年確診患上末期肺癌，在尋找社區服務的過程中認識了循道的社工。最初我們只想要送飯服務，但機緣下接觸到「生命關懷計劃」，讓我們家人得到心靈關顧及更認識相關的社區支援。

在太太剛確診時，家人都忙於工作。幸好有陪診服務，減輕了我們照顧上的壓力。面對太太身體每況愈下和病患帶來的情緒變化，的確令我精神繃緊。社工和義工上門及到醫院探訪，助我們處理了不少疑惑，亦分擔了我們的憂慮。健樂軒日間中心服務，亦讓我有休息及處理家務的時間。太太的情緒一直低落，社工安排了導師上門教女兒煮飯，女兒煮得一桌美味的小菜，太太很喜歡。活動的相片回憶錄，亦為我們家留下了美好回憶。

此外，社工亦安排太太與她三位姐妹參加電視台拍攝。太太的大姐也是末期病患者，當時家人心情都很沉重。感恩拍下「四姐妹情」的短片，讓太太跟姐姐那愛心、堅毅、不氣餒的精神得以留存，並成為家人的回憶和鼓勵。

不久之前，太太離世了。衷心感謝「生命關懷計劃」的服務，亦希望此服務可延續，祝福更多的家庭。

Mr. Wong / Blissful Life Project

Last year, my wife was diagnosed with terminal lung cancer. We met the social worker of Methodist Centre when searching for social service support. At first, we only wanted the home-based meal delivery service. Luckily, we had joined the Blissful Life Project, so that our family could attain emotional support during the hard period of time.

At the beginning of her diagnosis, all of my family members were busy with our work. Thank you for the escort service, which helped lessen our care pressure. Besides, when the health condition and emotions of my wife was worsen, I felt really tensed. The visits from the social worker and volunteers helped share my worries and tension. Day care service had also created time for me to take rest and do housework.

My wife was depressed. Impressively, the social worker had arranged a home-based cooking class for my daughter. She cooked a table of good dishes for us. This event had brought happiness and good memories to my family.

Moreover, the social worker arranged my wife and her three sisters to join a VIU-TV program. In fact, her eldest sister was also suffering from terminal illness. At that moment, my family was full of sadness. It was grateful to have this TV program. To me, it was not only a video that captured the 'Four Sisterhood' and the 'Love and Perseverance' of my wife and her sisters, but also it was a good memory and encouragement to my family.

My wife had just passed away. Wish the Blissful Life Project would keep blessing more families.

李婆婆 / 離院長者綜合支援計劃

我經常反覆出入醫院，由2011年起，我接受離院隊的服務。我與丈夫相依為命，我們不喜歡接受別人的幫助；但社工們一次又一次的接納和等待，慢慢我開始接納他們協助我處理藥物、餵藥、沖涼及到盈樂軒接受日間照顧服務。直至2017年尾，我告訴他們：「我想約耶穌食飯。」社工便為我聯繫最鄰近的教會，我亦因此認識了福音、決志並受洗。

有人說李婆婆很固執，不聽別人的勸告。更有人說，她有今天的遭遇也是她咎由自取。然而在同行的數年裡，我們感受到的只是她對其生活方式有自我的主見。她內心需要的，可不是說教式的「愛」，而是一夥能與她攜手同行和接納的「愛」。

這位堅毅的婆婆於2018年4月22日安息主懷。還記得一次家訪完結跟她道別時，這位不能自行站立的長者用僅有的力量站起來，希望與我們拍照留念，還問我們會不會再來，令每位同工都感到不捨和動容。而更令人感動的是能見證長者的轉變，愛就是那轉變的動力。



Granny Lee / Integrated Discharge Support Program for Elderly Patients (IDSP)

I had been repeatedly admitted to the hospital. I had received the service of IDSP team since 2011. I lived with my husband with rare social support from others. We refused to receive others' assistance. However, the social workers kept showing their love with great acceptance and patience. I started to accept their assistance in drug management, personal care and having day care service at the Methodist Rejoice Centre. By the end of 2017, I told them, "I would like to have a meal with Jesus." The social worker then contacted the church nearby. I got to listen to the Gospel and was later baptized.

Some might commented that Ms Lee was stubborn and never listened to others' advice. Some might even blame her suffering to her own self. During the years of companionship with her, we realized that she was in fact just a person who had a strong-mind in her lifestyle. Her inner need was to have someone who was willing to accept and accompany her with unconditional love, instead of persuading her to change.

Ms Lee rested in peace on April 22, 2018. Once when we were going to leave after visiting her, she insisted to stand up and take pictures with us, regardless the fact that she had great difficulties in standing up on her own. We were deeply touched by her act. We were glad to witness her changes. We believed that these changes was driven by the power of love from the service team.

延伸教育服務

CONTINUING EDUCATION SERVICE

本服務以「更新優化、與時並進」的信念，因應市場環境的變化，提供到位及貼身課程及活動，同時搜羅最新及最快資訊，為現有課程及活動增添新元素，令會員有全新的體驗。中心多元化的課程，更讓會員達致均衡發展。

兒童多元智能課程

兒童多元智能學習課程是深受歡迎的服務，回應社會的需要和轉變，定期舉辦各式各樣的兒童學習課程，有專業及富經驗導師授課，包括學前親子班、成長發展課、音樂、舞蹈、中普會話等藝術課程，以滿足不同成長階段的兒童需要。

興趣及專業課程

以「工作和生活平衡」為主題，創新的課程組合，種類涵蓋藝術、音樂、康體等多個範疇，透過專業及國際認可培訓的證書課程，提升學習層次和領域。創新的課程組合，給予參加者有更多新鮮感，與時並進。康體課程及烹飪更是近年持續成為最受歡迎的科目。

企業發展服務

本服務重點之一為企業提供專業的培訓和活動，現時已有超過五百間企業成為網絡會員。專業地為各行各業，設計各類型培訓課

Our service is based on the belief of "constant modernization and enhancement, and keeping pace with the times". Suitable and personalized courses and activities are provided in accordance with the changing market environment. At the same time, timely and the latest information is gathered to add new elements to our existing courses and activities which gives members a brand new experience. Our Centre's diversified curriculum allows members to achieve a balanced development.

Children Nurturing Program

The diversified intelligence learning curriculum for children was a popular service. In response to the needs and changes of the society, various kinds of children learning courses had been organized in a regular basis. There were professional and experienced instructors to teach our classes, including preschool classes, growth and development classes, music, dances, Mandarin, and other art courses to meet the needs of children in different stages of growth. Community Engagement held on June 23, 2018.

Interest and Professional Course

With the theme of "Work and Life Balance", a wide range of areas including arts, music and sports were covered in the innovative curriculum. Through professionally and internationally recognized certificate training courses, the level and scope of learning were enhanced. The innovative and up-to-date curriculum's freshness would be given to participants. The health and cooking curriculum had been consistently the most popular subjects in recent years.

Corporate Empowerment Service

One of the services focused on providing professional training and activities for enterprises. At present, more than 500 companies had become our online members. Various types of training courses were professionally designed in the form of lectures and workshops for all walks of life. The



中環廣場職員培訓課程之自衛術及危機處理
Central Plaza Self Defenses & Crisis Intervention Workshop



海洋公園職員會揮春水墨畫工作坊
Ocean Park Staff Social Club Chinese Painting Class



海洋公園職員會烹飪工作坊
Ocean Park Staff Social Club
Chinese Cooking Class

程、講座、工作坊等等。服務範圍包括興趣班、員工專業知識，機能訓練及團隊建立課程等，以提升團隊的工作效率，質素和氣氛。

到校服務

提供「度身訂造」的中小學興趣課程，提供音樂、藝術、舞蹈、運動、視藝的興趣課程；此外，功課輔導及學術課程，解決學生學習困難的需要，加強學生的學習能力。德育訓練，從遊戲及活動中得到正確的價值觀及態度。

家庭支援服務

為不同家庭提供分享平台和活動，加強親子互動和溝通的機會，建立和諧親密的關係。有趣和創新的親子家庭活動，包括參觀、親子旅行、親子烹飪，都深受家庭歡迎。

服務數字 Service Statistics

會員 Members

會員類別 Type of Membership	人數 No. of Members
0至5歲 Aged < 5	635
6至14歲 Aged 6-14	644
15至22歲 Aged 15-24	31
25歲或以上 Aged > 25	1,314
合共 Total :	2,624

課程 Courses

課程種類 Type of Courses	課程數目 No. of Courses	出席人次 No. of Attendance
兒童及青少年 Kids & Youth Programs	749	29,143
親親家庭樂 Family Programs	22	282
兒童暑期 Summer Programs	147	6,902
親職家長工作坊 Parent Workshops	10	112
藝術 Arts	65	2,400
舞蹈 Dance	130	11,594
烹飪 Cookery	160	1,224
康樂運動及保健養生 Health Care & Medical Sciences	559	28,523
時尚品味及家居工藝 Beauty & Handicrafts	24	212
音樂 Music	292	5,091
合共 Total :	2,158	85,483

service scope included interest classes, professional knowledge, performance enhancement training and team building courses to enhance teamwork efficiency, quality and atmosphere.

Student Empowerment Service

"Tailor-made" courses were provided for primary and secondary students who were interested in music, art, dance, sports and visual arts. In addition, homework counseling and academic courses addressed the difficulties encountered by students in learning and strengthening students' learning abilities. Moral education training through games and activities was also part of our service.

Family Support Service

Sharing platforms and activities for different families were provided to strengthen parent-child interaction and communication, and to establish harmonious and close relationships. Interesting and innovative family activities, including visits, family trips and cookery for parents and children gained popularity among families.

企業發展服務 Corporate Empowerment Services (CORPS)

服務機構 Organizations	課程數目 No. of Courses	出席人次 No. of Attendance
工商機構 Business Organizations	56	4,455
社會服務機構 NGO & Social Service Organizations	2	12
政府部門 Government & Public Sectors	38	1,848
合共 Total :	96	6,315

到校服務「優秀學生培育計劃」Fire Project

合辦課程學校種類 Type of Schools	學校數目 No. of Schools	出席人次 No. of Attendance
小學 Primary School	5	1,467
中學 Secondary School	1	440
總數 Total :	6	1,907



到校課程齊來學扭波
School Service Balloons
Twisting

服務使用者心聲 LIFE STORY

太平保險 / 企業發展服務

我們公司與循道衛理中心有多年的合作，他們為我們的員工提供各種有趣的工作坊或培訓，例如玻璃押花工作坊、能量塔製作等。培訓導師非常專業，態度和藹，也很有耐心，價格也較為優惠，所以我們對過往合作很滿意，也願意與貴中心繼續合作。

Taiping Reinsurance Co., Ltd / Corporate Empowerment Service

Our company had cooperated with Methodist Centre for many years. The Centre provided various interesting workshops or trainings for us, including pressed flower accessories workshops and energy towers, etc. The instructors were very professional with good attitude and patience, and the price was very reasonable. We were satisfied with the services they provided and were looking forward to have further cooperation in the future.

輔導及就業綜合服務

COUNSELING AND INTEGRATED EMPLOYMENT SERVICE

ERB「人才發展計劃」

本服務在2017-2018年度新開辦了3項課程，包括「行政助理基礎證書」、「咖啡拉花藝術基礎證書(兼讀制)」及「護理員實務技能系列基礎證書(兼讀制)」。

此外，本年度亦榮獲僱員再培訓局頒發「課程發展獎」及「課程質素保證工作表現持續優異嘉許狀」。而本中心提名的僱主亦分別獲頒ERB傑出僱主年度大獎、傑出僱主獎及優異僱主獎。

‘Train’ 出光輝每一程訓練計劃

本年繼續與港鐵合辦「‘Train’ 出光輝每一程訓練計劃」，名額已增加至200名中四至中五學生。在為期10天的工作坊、訓練營會、工作體驗及實習中，學生透過訓練認識自己、挑戰自我、互相溝通、解難合作及個人生涯規劃。同學經歷了一個豐盛又充實的暑假。

循道衛理喜雅社區物理治療服務

本服務在2017-2018年度獲得「滙豐香港社區夥伴計劃」贊助，開展「樂齡社區運動醫療計劃」，由物理治療師帶領物理治療助理團隊，為區內長者及中風患者提供免費門診及到戶物理治療服務，同時亦為本中心的物理治療助理畢業學員提供超過200個實習及就業機會，讓他們學以致用，回饋社會。

輔導服務

輔導服務統計顯示個人心理輔導及婚前輔導之需求仍佔總服務人次的大多數，分別超過六成及兩成半；而在個人輔導類別中，臨床心理服務之需求亦較往年增加。而過去一年與多間機構及學校合作，安排臨床心理學家或家庭治療師，為學生及家長舉辦訓練小組及工作坊。有見兒童輔導個案的上升趨勢，本中心正籌備為特殊教育需要學童及青少年而設之專項服務單位。

ERB Manpower Development Scheme

There were 3 new courses in 2017-2018, including Foundation Certificate in Administrative Assistant Training, Foundation Certificate in Coffee Roasting (Part-time) and series of Foundation Certificates in Practical Skills for Care Worker. In addition, we were honoured to be awarded 'ERB Outstanding Award for Course Development' and 'Award of Outstanding Performance Consistently in Various Quality Assurance Measures'. Our nominated employers were also awarded 'ERB Excellence Award for Employers', 'ERB Outstanding Award for Employers' and 'ERB Merit Award for Employers'.

‘Train’ for Life’s Journey

'Train' for Life's Journey, cooperated with MTR Corporation Limited, increased to 200 Form 4 and 5 students this year. They joined workshops, training camps and job tasting training in 10 days to understand and challenge themselves, develop their communication skills and problem-solving skills and plan their life. They had a meaningful and fruitful summer holiday.

Methodist Heya Physiotherapy Community Service

Funded by HSBC Hong Kong Community Partnership Programme in 2017-2018, there had been a new service 'Sports Medicine for the Community'. With physiotherapists leading a team of physiotherapist assistants, they provided free centre-based and outreach physiotherapy service for elderly and stroke patients. This service had also benefited the graduates of physiotherapist assistant for over 200 placement opportunities.

Counseling Service

According to the counseling service statistics, individual counseling and pre-marital counseling constituted over 60% and 25% of the service respectively, which has made up the majority of all the new cases. Compared with past years, the demand for clinical psychology service has boosted this year. Besides, by cooperating with different companies and schools, clinical psychologists and family therapists have provided training groups and workshops for students and their parents. In response to the upward trend of children counseling cases, a special unit handling children and youngsters with Special Educational Needs (SEN) was being set up to develop specific services.

服務數字 Service Statistics

就業掛鈎課程畢業人次 Graduates of Placement-tied Courses

課程類別 Type of Courses	畢業人次 No. of Graduates
家居服務 Domestic Service	149
物業管理及保安 Property Management and Security	209
商業 Business	7
美容 Beauty Care	103
酒店 Hotel	54
飲食 Catering	55
健康護理 Healthcare Services	112
中醫保健 Chinese Healthcare	54
社會服務 Social Services	59
青年培育 Youth Training	7
合共 Total :	809



滙豐香港社區夥伴計劃 - 運動治療體驗日
HSBC Hong Kong Community Partnership Programme - Sports Medicine Day

通用技能及「新技能提升計劃」課程畢業人次 Graduates of Generic Skills and "SUS Plus" Courses

課程類別 Type of Courses	畢業人次 No. of Graduates
資訊科技應用 IT Applications	287
職業語文 Workplace Language	229
家居服務 Domestic Service	377
美容 Beauty Care	143
物業管理及保安 Property Management and Security	508
中醫保健 Chinese Healthcare	186
健康護理 Healthcare Services	237
飲食 Catering	35
合共 Total :	2,002



滙豐香港社區夥伴計劃 - 繪本館參觀
HSBC Hong Kong Community Partnership Programme - Picture Book Workshop Visit

樂活一站地區服務站 Smart Living Regional Scheme

項目 Items	出席人次 No. of Attendance
空缺登記數目 No. of Registered Vacancies	4,882
填補空缺數目 No. of Filled Vacancies	3,294
成功就業人數 No. of Successful Placement	1,952

滙豐香港社區夥伴計劃 - 繪本館參觀
HSBC Hong Kong Community Partnership Programme - Picture Book Workshop Visit

樂健按摩服務 Enjoy Your Health Massage Service

項目 Items	出席人次 No. of Attendance
工商機構及屋苑會所(節) Commercial Organization and Club House (Session)	11,000

青少年就業服務 Youth Employment Service

項目 Items	出席人次 No. of Attendance	班組 / 工作坊 / 講座 / 大型活動數目 No. of Classes / Workshops / Talks / Events
工作TEEN梯 Career Services	3,234	91
展翅青見計劃 YETP Project	120	1
展翅青見計劃輔導個案 YETP Case	502	-
滙豐香港社區夥伴計劃 HSBC Hong Kong Community Partnership Programme	2,161	27
'Train' 出光輝每一程訓練計劃 'Train' for Life's Journey	2,970	11

循道衛理喜雅社區物理治療服務 Methodist Heya Physiotherapy Community Service

項目 Items	出席人次 No. of Attendance
門診物理治療 Centre-based Physiotherapy	353
到戶物理治療 Outreach Physiotherapy	219
專題訓練/工作坊 Specific Training / Workshop	86
物理治療助理實習計劃 Practicum Scheme for Physiotherapist Assistant	166

輔導服務 Counseling Service

項目 Items	出席人次 No. of Attendance
婚前輔導 Pre-marital Counseling	796
輔導熱線 Counseling Hotline	1,195
情緒輔導 Emotion Counseling	2,208
賭博輔導 Gambling Counseling	65
家庭/關係輔導 Family/Relationship Counseling	372
兒童輔導 Children Counseling	159
講座/工作坊 Talks & Workshops	420



循道衛理喜雅社區物理治療服務
Methodist Heya Physiotherapy
Community Service



工作 TEEN 梯入校活動
Youth Career In-school Service

服務使用者心聲
LIFE STORY

李增強 / ERB 課程畢業學員

現在完成了一系列保安相關的再培訓課程，課程對我來說算是應付有餘，因課程設計、教學方法等都能切合學員需要，在教學上利用較輕鬆之形式十分有效。

在為期一個月的課程，認識了一班同學。大家相處日子雖短，但我們之間相處也非常融洽，這也有賴導師們之帶領與協助。當然最為高興能看到中心配合同學的需要，為大家介紹了不少僱主，令我們更容易找到工作，從而為香港社會釋放不少勞動力！

最後藉此機會，代表同學們感謝所有導師在過往的辛勞，希望我們能在這個行業上發亮發光！

LI Jung Keung / ERB Graduate

I had finished several security-related ERB courses. Due to the suitable course design and effective teaching methods, I found them easy to learn.

In this one-month training, I had met classmates from different background. We got along well in this short period of time with instructors' guidance and help. We were glad that the centre made referrals to companies based on our strengths. This helped us a lot in finding jobs. I believed that much manpower would be released in Hong Kong's job market through the courses.

Finally, I would like to thank all of our instructors on behalf of my classmates. We hoped that we could become the shining stars in the security industry.



機構活動
AGENCY EVENTS

聖誕聯歡盆菜宴 CHRISTMAS “POON CHOI” BANQUET

聖誕聯歡盆菜宴於2017年12月16日晚上假愛秩序灣綜合青少年服務中心舉行。當日同工於下班後前往中心同心敬拜、聆聽中心董事會主席潘玉娟牧師的信息分享。及後，潘牧師及總幹事黃民麗女士嘉許退休同工及頒發長期服務獎。接著，同工們移師到中心平台享用盆菜，傾談分享。同時，關顧部同工主持圍獎及抽獎環節，同工滿載而歸，渡過歡樂的晚上。



The Christmas “Poon Choi” Banquet of the Methodist Centre was held on December 16, 2017 at Aldrich Bay Integrated Children & Youth Service Centre. We worshiped together and listened to the sermon by Rev POON Yuk Kuen, the Chairman of the Board of Directors. Afterwards, Rev POON and the General Secretary of Methodist Centre, Ms Sindy WONG presented Retirement Awards and Long Service Awards to our valuable staff. Then we moved to the podium for the “Poon Choi” Banquet. There was lucky draw during the banquet and all of us had a fruitful and enjoyable night.



榮休及長期服務獎

FORMAL RETIREMENT AND LONG SERVICE AWARDS



循道衛理中心於2017年12月16日聖誕聯歡會中頒發「榮休獎」及「長期服務獎」予以下13位同工。The “Retirement Award” and “Long Service Award” had been presented to the following 13 staff members at the Christmas Party held on December 16, 2017.

同工姓名 Name of Staff	所屬部門 Department	服務年資 Years of Service
馮玉玲女士 Ms FUNG Yuk Ling	愛秩序灣綜合青少年服務 Aldrich Bay Integrated Children and Youth Service	「榮休獎」全職21年 Retirement Award, Full time 21 years
楊慧兒女士 Ms YEUNG Wai Yee, Stevie	輔導及就業綜合服務及 延伸教育服務 Counseling & Integrated Employment Service and Continuing Education Service	「榮休獎」全職20年 Retirement Award, Full time 20 years
李淑芬女士 Ms LEI Sok Fan	物業服務 Building Service	「榮休獎」全職19年 Retirement Award, Full time 19 years
張子文先生 Mr CHEUNG Tze Man	老人服務 Elderly Service	「榮休獎」全職18年 Retirement Award, Full time 18 years
周美群女士 Ms CHOW Mei Kwan, Ivy	老人服務 Elderly Service	全職25年 Full time 25 years
孔御君女士 Ms HOONG Yu Kwan, Wendy	老人服務 Elderly Service	全職25年 Full time 25 years
陳志軒先生 Mr CHAN Chi Hin, Eric	愛秩序灣綜合青少年服務 Aldrich Bay Integrated Children and Youth Service	全職20年 Full time 20 years
吳麗君女士 Ms NG Lai Kwan, Carolyn	老人服務 Elderly Service	全職15年 Full time 15 years
霍凱卉女士 Ms FOK Hoi Wai, Jojo	輔導及就業綜合服務 Counseling & Integrated Employment Service	全職15年 Full time 15 years
劉淑霞女士 Ms LAU Shuk Ha, Candy	輔導及就業綜合服務 Counseling & Integrated Employment Service	全職15年 Full time 15 years
黃嘉偉先生 Mr WONG Ka Wai, Kelvin	中央行政 Central Administration	全職10年 Full time 10 years
何寶兒女士 Ms HO Po Yee, Boey	中央行政 Central Administration	全職10年 Full time 10 years
孫美賢 Ms SUEN Mei Yin	兒童及家庭支援服務 Children and Family Support Service	半職10年 Part time 10 years

機構計劃日

AGENCY PLANNING DAY

中心致力提供專業優質服務，持續改善外在形象及內部溝通。在制定機構未來方向及策略時，亦會廣納各職級同工意見。於2017年12月18日首次舉辦機構計劃日，將全機構各部門同工分成多個小組，對13項政策範疇作出討論及提出創新建議，涉及項目包括建立機構形象、開拓資源、創新及欣賞文化、跨部門合作等，藉此加強各部門同工溝通及投入度。活動當日，各同工均積極參與討論及匯報，同時對機構將採用其意見作發展方針表示滿意。

The Centre aims to provide professional quality service and keep improving its external image and internal communication. When deciding future direction and policy, the Centre will collect the opinions of staff from different levels. The first Agency Planning Day was held on December 18, 2017. Staff from different departments formed into groups. They discussed and gave new suggestions on 13 policy aspects such as brand building, fund-raising, innovative and appreciation culture, unit collaboration and so on. Staff actively participated in the discussion and presentation. They were pleased to know that the Centre was going to apply their opinions for its development approach.



最具心思獎
Most Thoughtful Award



最具創意獎
Most Creative Award



最有智慧獎
Most Intelligent Award

機構使命日 AGENCY MISSION DAY



「實踐基督使命，關愛弱勢社群」為循道衛理中心的機構使命，為了讓同工認清使命、投入工作，2018年2月26日特意舉辦機構使命日，並邀請葉漢浩博士以「看見鄰舍、看見使命」為題作分享。其後更安排十名來自不同服務及職級的同工以自身經歷分享見證，述說加入中心的點滴。

The mission of Methodist Centre was "to live out the mission of Jesus Christ and to care about the disadvantaged groups". In order to help the staff to get a clear understanding of the mission and commit to their work, the Agency Mission Day was held on February 26, 2018. Dr. IP Hon Ho was invited to give a sharing on the topic "See the Neighbor, See the Mission". 10 staff from different departments and levels shared their experience in Methodist Centre.

以下為部分同工對生命反思與活動回應： Some of the reflection and response from staff:

“個案分享不只於工作上的聯繫，而是生命的交流，上帝的福音。
Case sharing was not just job-related communication. It was a life exchange, GOD's gospel.”

“感恩大家也用心真誠為服務對象服務。這些分享能成為我更加努力的動力，亦喚醒了我當初的熱誠。
It was great to know that we were all working for our service users with heart. The sharing encouraged me to work better and reminded me of my genuine enthusiasm.”

“我不是基督徒，但我一直感到神的帶領及安排。感恩祂把我放在祂的當中，讓我有更多機會接觸祂、感受祂。我會繼續堅守使命，用謙卑的心去關懷人。
I am not a Christian but I always experience the guidance of GOD. Thank GOD for giving me the chance to be connected with Him and feel Him. I would uphold the mission, stay humble and show concern to others.”

“葉博士見證觸動人心；整個活動極具意義，凝聚同工。
The sharing by Dr. Ip was touching. The event was meaningful and helped unite staff.”

“使命日讓我再次檢視自己當社工的初心，是一次很好的聚會，給我加添不少動力。亦能看到中心的文化，是一個同心同行，互相支援的隊工。
Mission Day helped me reflect on my initial intention of being a social worker. This activity was good and gave me lots of strength. I gained a clear idea of our agency culture – a team which walk hand in hand and support each other.”

“非常欣賞機構舉辦是次使命日！整個活動很有意義，凝聚同工。
I very appreciated this Mission Day. The activities were meaningful and helpful in cohering the staff.”

“感恩能夠聽到許多同事感動人心的分享，亦感受到MC是很有愛的大家庭！
It was great to listen to the touching sharing of colleagues. I strongly felt that MC is a family full of love!”

“感謝上帝帶領我來到MC！多年來，無論在服務發展、人事變動、大小難關中，都看到神不盡的恩典。使命日透過總幹事和各同工的分享，讓我心靈得著釋放和安慰、生命得著激勵和造就。我深信神會繼續動工，向人親自發出獨特的召命，成就祂的美意！
Thank GOD for leading me to MC. Through these years, I could see the grace of GOD in all service development, personnel changes and difficulties. After listening to the sharing of the General Secretary and colleagues, I felt relieved and encouraged. I believed that GOD would give calling to the right one to work for Him.”

“喜歡葉博士的分享，具啟發性。享受與不同部門同工分組分享，感受到MC內有很多有心、有使命感的同工。
I loved the sharing of Dr Ip. It was inspiring. I enjoyed the sharing time with colleagues from different service units. There are so many diligent colleagues working with strong sense of mission in MC.”

“難得機會可以彼此分享使命、異象；毋忘初心，在不同崗位上合一服侍。
It was a valuable opportunity for sharing mission and vision with each other. Never forget why you started. Let's serve in different positions together.”

“我覺得很難得可以有機會彼此分享使命、異象、工作經歷、個人成長。每個分享也很珍貴的，的確鼓勵到我們要用心工作。
It was really a valuable opportunity for us to share the mission, vision, job experience and personal growth. The sharing of everyone was so precious. It was a great encouragement for us to work better.”

“感謝主讓我有同行的戰友、工作上的伙伴！我深刻的體會到神恩典豐富。未來是未知的，但我只想被主用，盡微小的力量去發出一點光，照耀、溫暖身邊的人。
Thank GOD for giving me the co-workers who always stand by me. Hope that I would be able to be used by GOD, with my limited ability to help the people around me.”

The background is a solid blue color with a pattern of white dots of varying sizes and densities, creating a sense of depth and movement. Several thin, white, curved lines sweep across the page, adding a dynamic and modern feel to the design.

行政及人力資源管理
ADMINISTRATION &
HUMAN RESOURCES
MANAGEMENT

人才發展 TALENT DEVELOPMENT

職員培訓

創意思維工作坊

本機構於2017年9月25日邀請了突破機構的事工發展總監梁柏堅先生和影音及數碼媒體經理蔡廉明先生，為同工舉辦「創新思維：媒體與社會需要」工作坊，是次訓練給同工帶來啟發，學習以不同的角度思考，並能刺激同工的創意。

STAFF TRAINING

Creative Thinking Workshop

On September 25, 2017, Mr LEUNG Pak Kin, Director of Ministry Development and Mr Andrew CHOI Lim Ming, Manager of Audio-visual and Digital Media of Breakthrough were invited to hold a workshop of "Creative Thinking: Media and Social Needs" for staff. This training workshop provided new insights to the staff in thinking from different perspectives and stimulating their creativity.



預防長者自殺訓練

此訓練由生命熱線的同工負責，並於2018年1月24日舉行。是次訓練增加同工對長者自殺徵兆、自殺風險評估及危機個案介入的知識，有助同工提供更專業的服務予長者。

Prevention of Elderly Suicide Training

The training was provided by Suicide Prevention Services on January 24, 2018. It helped the staff enhance their knowledge of elderly suicide symptoms, suicidal risks assessment and case crisis intervention. The staff was equipped to deliver more professional service to the elderly.



支援特殊學習需要之兒童及青少年訓練

為加強同工對特殊學習需要之兒童及青少年的認識，於2017年11月13日及2018年3月12日分別進行了「認識及支援自閉症譜系兒童及青少年」及「認識及支援專注力不足及過度活躍之兒童及青少年」訓練。兩次訓練均由循道衛理觀塘社會服務處的臨床心理學家擔任講員，當中的個案分享及危機處理技巧令同工獲益甚多。

Training in Supporting Children and Youth with Special Educational Needs

In order to enhance staff's understanding of children and youth with special educational needs, two types of training namely "Understanding and Support Children and Adolescents with Autism Spectrum" and "Understanding and Support Children and Adolescents with Attention Deficit and Hyperactivity Disorder" were delivered on November 13, 2017 and March 12, 2018 respectively. The training was conducted by clinical psychologists of Kwun Tong Methodist Social Service. Staff gained much knowledge on case sharing and crisis management skills.



領袖集思會

本機構於2017年12月4日舉行領袖集思會，合共有28位部門主管及主任參與。領袖集思會目的是加強員工的溝通，收集中高管理層對機構管治和管理，以及對服務運作的意見。

LEADER BRAINSTORMING WORKSHOP

The Leader Brainstorming Workshop was held on December 4, 2017. In total, 28 Unit Supervisors and Officers attended the workshop. It aimed to enhance colleagues' communication and collect opinions on centre governance and management as well as service operation from the management staff.



實習培訓 PLACEMENT STUDENTS

香港大學 The University of Hong Kong

戴安妮 DAI Anni 蘇奕嘉 SU Yijia

香港中文大學 The Chinese University of Hong Kong

梁淑馨 LEUNG Shuk Hing

香港浸會大學 Hong Kong Baptist University

鍾靜紅 CHUNG Ching Hung 吳鳳蓮 NG Fung Lin 宋欣祈 SUNG Yan Ki
謝燕婷 TSE Yin Ting 黃思蕊 WONG Sze Yui

香港理工大學 The Hong Kong Polytechnic University

葉慧敏 IP Wai Man Irene 何沛瑩 HO Pui Ying Eva

香港城市大學 City University of Hong Kong

張貝芝 CHEUNG Pui Chi 梁穎莊 LENUG Wing Chong, Ivy 陸家耀 LUK Kar Yiu

香港樹仁大學 Hong Kong Shue Yan University

陳詩雅 CHAN Sze Nga 鄧靄盈 TANG Oi Ying

香港大學專業進修學院 HKU School of Professional and Continuing Education

陳敬濠 CHAN King Ho Stone 張家成 CHEUNG Ka Shing 楊欣盈 YEUNG Yan Ying

香港專業教育學院 (沙田) Hong Kong Institute of Vocational Education (Sha Tin)

張愛靈 CHEUNG Oi Ling 孔祥輝 HUNG Cheung Fai 黃偉賢 WONG Wai Yin

明愛專上學 Caritas Institute of Higher Education

張景豪 CHEUNG King Ho 黃樂津 WONG Lok Chun

上海華東理工大學 Shanghai East China University of Science and Technology

梁佳瑄 LIANG Gei Sun

四川農業大學 Sichuan Agricultural University

鄧晨 TENG Xin

中國青年政治學院 China Youth University for Political Sciences

潘嘉琪 PUN Gua Zhi

資訊科技 INFORMATION TECHNOLOGY

2017-2018年度，本機構落實推行各項活用資訊科技的方案，以提高工作效率及準確性，事項包括：

- (1) 全面使用「電子假期系統」；
- (2) 修訂活動財政及結算表格為電子計算表格；
- (3) 修訂零用現金結算表格為電子計算表格；
- (4) 總部全面安裝 Wi-Fi ；
- (5) 系統優化 – 詢問處系統、老人服務地區中心及綜合家居照顧服務系統；
- (6) 改善中心網頁的可被搜尋機率。

This year, MC had put forward different programs applying information technology to enhance efficiency and accuracy at work, including:

- (1) Full implementation of "eLeave System";
- (2) Revised activity budget and balance sheet to electronic forms;
- (3) Revised petty cash balance sheet to electronic forms;
- (4) Installed Wi-Fi facilities at Head Office;
- (5) System Enhancement - Counter Computer System, Computer System of District Elderly Community Centre and Integrated Home Care Service Team of Elderly Service;
- (6) Increased the online visibility of the Centre's website in web search engines.



財務報告 FINANCIAL REPORT

財務摘要

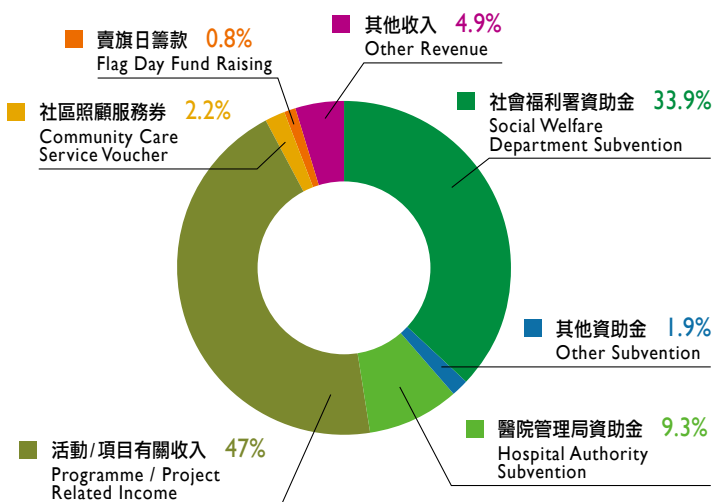
FINANCIAL HIGHLIGHTS

收入

於2017-18年度之總收入為港幣1億1,520萬元。與上年度比較，增加了港幣566萬元、或5.2% (2016-17年度之總收入為港幣1億950萬元)。本年度收入增加主要由於各個非資助服務的活動收入上升。

INCOME

Total income has increased by HK\$5.66 million or 5.2% to HK\$115.2 million in 2017-18 as compared with the previous year. (Income for 2016-17 was HK\$109.5 million). The increase was mainly attributable to the increase in programme related income in non-subsided services.

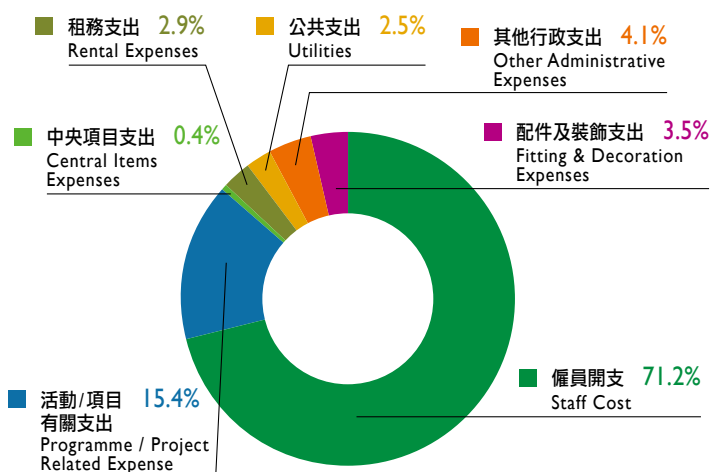


支出

於2017-18年度之總支出為港幣1億440萬元。與上年度比較，增加了港幣248萬元、或2.4% (2016-17年度之總收入為港幣1億200萬元)。本年度支出增加主要由於薪酬支出增加。

EXPENDITURE

Total expenditure has increased by HK\$2.48 million or 2.4% to HK\$104.4 million in 2017-18 as compared with the previous year. (Expenditure for 2016-17 was HK\$102.0 million). The increase was mainly due to increase in staff costs.

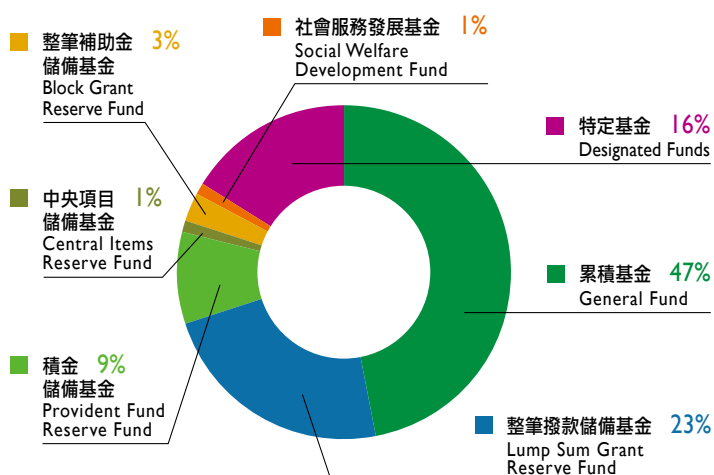


儲備及基金

2017-18年度之總盈餘為港幣1,074萬元 (2016-17年度為港幣757萬元)。全數已撥入本中心各有關儲備及基金，截至2018年3月31日，本中心儲備總額為港幣4,786萬元。

RESERVES AND FUNDS

There was a total surplus of HK\$10.74 million for the year 2017-18 (2016-17: HK\$7.57 million), which was transferred to various reserves and funds held by the Centre. As at 31 March 2018, the Centre has a total reserve of HK\$47.86 million.



完整綜合審計報告可於循道衛理中心網頁 (www.methodist-centre.com) 查閱
The complete set of Audited Combined Financial Statements is available on our website (www.methodist-centre.com)

**METHODIST CENTRE
COMBINED STATEMENT OF INCOME AND EXPENDITURE
FOR THE YEAR ENDED 31 MARCH 2018
(綜合收入與支出報表)**

收入 INCOME	2017-2018	2016-2017
	HK\$'000	HK\$'000
社會福利署資助金*	\$39,077	\$38,145
Social Welfare Department Subvention		
其他資助金 (淨收入) #	\$2,221	\$2,257
Other Subvention (Net)		
醫院管理局資助金	\$10,663	\$10,382
Hospital Authority Subvention		
活動 / 項目有關收入	\$54,132	\$52,870
Programme / Project Related Income		
社區照顧服務券	\$2,512	\$1,655
Community Care Service Voucher		
賣旗日籌款	\$955	\$1,031
Flag Day Fund Raising		
其他收入	\$5,615	\$3,175
Other Revenue		
合共收入 INCOME TOTAL :	\$115,175	\$109,515
支出 EXPENDITURE		
僱員開支	\$74,362	\$71,417
Staff Cost		
活動 / 項目有關支出	\$16,031	\$16,040
Programme / Project Related Expense		
中央項目支出	\$451	\$175
Central Items Expenses		
租務支出	\$3,060	\$4,929
Rental Expenses		
公共開支支出	\$2,596	\$1,846
Utilities		
其他行政支出	\$4,266	\$4,716
Other Administrative Expenses		
配件及裝飾支出	\$3,667	\$2,827
Fitting & Decoration Expenses		
合共支出 EXPENDITURE TOTAL :	\$104,433	\$101,950
全年淨盈餘 SURPLUS FOR THE YEAR	\$10,742	\$7,565

* 包括整筆撥款、積金撥款、中央項目撥款、租金與差餉撥款與支助、改善家居及社區照顧服務撥款
Included Lump Sum Grant, Provident Fund Grant, Central Items Grant, Rent & Rates Grants & Subsidies, and Service Subvention for Enhanced Home & Community Care Services

包括樂活一站撥款、獎券基金撥款、整體補助金及社會服務發展專款
Included Smart Living Subvention, Lotteries Fund Grants, Block Grant & Social Welfare Development Grants

METHODIST CENTRE
COMBINED STATEMENT OF FINANCIAL POSITION
AS AT 31 MARCH 2018
(綜合資產負債報表)

資產

ASSETS

流動資產

Current Assets

租金與公用服務按金
Rental and Utility Deposits
應收未收資助金
Subventions Receivable
預付款項
Advance Payments
應收未收款項
Accounts Receivable
應收聯營單位的款項
Amounts due from Affiliates
現金與銀行結存
Cash and Bank Balances

合共資產
ASSETS TOTAL :

2017-2018

HK\$'000

\$1,038
\$2,198
\$1,041
\$3,701
\$0
\$46,655

\$54,633

2016-2017

HK\$'000

\$1,362
\$1,024
\$1,169
\$2,748
\$2,653
\$39,318

\$48,274

基金與負債

FUNDS AND LIABILITIES

基金

Funds

累積基金
General Fund
整筆撥款儲備基金
Lump Sum Grant Reserve Fund
積金儲備基金
Provident Fund Reserve Fund
租金與差餉儲備基金
Rent & Rates Reserve Fund
中央項目儲備基金
Central Items Reserve Fund
整筆補助金儲備基金
Block Grant Reserve Fund
社會服務發展基金
Social Welfare Development Fund
僱員再培訓局儲備基金
Employees Retraining Board Reserve Fund
賣旗日基金
Flag Day Fund
特定基金
Designated Funds
獎券基金儲備基金
Lotteries Fund Reserve Fund
香港政府流動網絡服務
WiFi Service by HKSAR

合共基金
FUNDS TOTAL :

\$22,512
\$10,906
\$4,638
(\$226)
\$564
\$1,549
\$344
(\$139)
\$0
\$7,741
(\$9)
(\$16)

\$47,864

\$15,117
\$11,891
\$4,330
(\$156)
\$535
\$1,330
\$244
(\$309)
\$788
\$6,667
\$55
\$0

\$40,492

流動負債

Current Liabilities

應付未付款項
Accounts and Other Payables
提前收到款項
Receipts in Advance
學費按金
Deposit of Course Fee
應付未付年假預計
Provision for Annual Leave Payable

合共流動負債
CURRENT LIABILITIES TOTAL :

\$894
\$3,303
\$61
\$2,511

\$6,769

\$1,768
\$3,240
\$61
\$2,713

\$7,782

合共基金與負債

FUNDS AND LIABILITIES TOTAL :

\$54,633

\$48,274

METHODIST CENTRE COMBINED STATEMENT OF CASH FLOW FOR THE YEAR ENDED 31 MARCH 2018 (綜合現金流量表)

由營運活動而來之現金流 CASH FLOW FROM OPERATING ACTIVITIES

全年淨盈餘 Surplus for the Year		
調整 Adjustments for:		
應付未付年假預計 Provision for Annual Leave Pay		
利息收入 Interest Income		
營運資金改動前之營運盈餘 Operating Surplus before Working Capital changes:		

2017-2018

HK\$'000

\$10,742

(\$203)

(\$6)

\$10,533

2016-2017

HK\$'000

\$7,565

\$439

(\$4)

\$8,000

營運資金改動 Changes in Working Capital

租金與公用服務按金 Rental and Utility Deposits		
應收未收資助金 Subventions Receivable		
預付款項 Advance Payments		
應收未收款項 Accounts Receivable		
應收聯營單位的款項 Amounts due from Affiliates		
應付未付款項 Accounts and Other Payables		
提前收到款項 Receipts in Advance		
學費按金 Deposit of Course Fee		
發展基金 Development Fund		
康和計劃基金 Project Concord Fund		
由營運而來之淨現金 Net Cash Generated from Operating Activities:		

\$323

(\$1,174)

\$128

(\$953)

\$2,653

(\$874)

\$63

\$1

(\$3,373)

\$3

\$7,330

\$953

\$280

(\$523)

\$95

\$1

(\$1,164)

\$1,067

\$8

(\$94)

\$45

\$8,668

由投資活動而來之現金流 CASH FLOW FROM INVESTING ACTIVITIES

利息收入 Interest Received		
由投資而來之淨現金 Net Cash Generated from Investing Activities:		

\$6

\$6

\$4

\$4

由融資活動而來之現金流 CASH FLOW FROM FINANCING ACTIVITIES

社會福利署回撥 Clawback by SWD		
由融資而來之淨現金 Net Cash Generated from Financing Activities:		

\$0

\$0

(\$140)

(\$140)

淨現金結算之增加 Net Increase in Cash and Cash Equivalents		
年度初之現金結算 Cash and Cash Equivalents at the Beginning of the Year		
年度尾之現金結算 Cash and Cash Equivalents at the End of the Year		

\$7,336

\$39,319

\$46,655

\$8,532

\$30,786

\$39,318

現金結算之分析: 現金與銀行存款 Analysis of the Balances of Cash and Cash Equivalents: Cash and Bank Balances		
---	--	--

\$46,655

\$39,318

完整審計周年財務報告 (呈交社會福利署) 可於循道衛理中心網頁 (www.methodist-centre.com) 查閱
The complete set of Audited Annual Financial Report (to Social Welfare Department) is available on our website (www.methodist-centre.com)

ANNUAL FINANCIAL REPORT NGO: METHODIST CENTRE 1 APRIL 2017 TO 31 MARCH 2018

	<u>2017-2018</u>	<u>2016-2017</u>
	\$	\$
A. INCOME		
1. Lump Sum Grant		
a. Lump Sum Grant (excluding Provident Fund)	25,955,613.00	25,234,548.00
b. Provident Fund	2,325,122.00	2,275,852.00
2. Special One-off grant	0.00	0.00
3. Fee Income	2,381,247.40	1,085,363.40
4. Central Items	495,650.00	475,550.00
5. Rent and Rates	757,294.00	780,367.00
6. Other Income	2,453,685.53	3,146,504.06
7. Interest Received	5,045.72	4,095.42
TOTAL INCOME	34,373,657.65	33,002,279.88
B. EXPENDITURE		
1. Personal Emoluments		
a. Salaries	24,662,018.40	23,343,922.31
b. Provident Fund	1,886,933.12	1,820,489.67
c. Allowances	0.00	0.00
Sub-total	26,548,951.52	25,164,411.98
2. Other Charges	6,448,765.65	5,087,633.61
3. Central Items	450,940.00	175,460.00
4. Rent and Rates	820,532.00	792,416.00
5. Special One-off Grant Payments	0.00	0.00
TOTAL EXPENDITURE	34,269,189.17	31,219,921.59
C. SURPLUS/(DEFICIT) FOR THE YEAR	104,468.48	1,782,358.29



服務單位
SERVICE UNITS

服務單位 SERVICE UNITS

(截至2018年10月1日 As at October 1, 2018)

中央行政部 Central Administration & 物業服務 Building Service

地址 Address 香港灣仔軒尼詩道22號地庫
B1/F, 22 Hennessy Road, Wan Chai, Hong Kong.
電話 Tel 2527 2025 傳真 Fax 2865 4966 電郵 Email mc@methodist-centre.com

場地租借服務 Venue Booking Service

地址 Address 香港灣仔軒尼詩道22號地庫
B1/F, 22 Hennessy Road, Wan Chai, Hong Kong.
電話 Tel 2527 3602 傳真 Fax 2865 4966 電郵 Email bldg@methodist-centre.com

輔導及就業綜合服務 Counseling & Integrated Employment Service

循道衛理灣仔培訓中心 Methodist Wan Chai Training Centre

地址 Address 香港灣仔軒尼詩道22號地庫及3-4樓
B1/F, 3-4/F., 22 Hennessy Road, Wan Chai, Hong Kong.
電話 Tel 2527 2250 傳真 Fax 2865 2903 電郵 Email cics@methodist-centre.com

循道衛理輔導中心 Methodist Counseling Centre

地址 Address 香港灣仔軒尼詩道22號地庫
B1/F, 22 Hennessy Road, Wan Chai, Hong Kong.
電話 Tel 2520 4933 傳真 Fax 2865 2903 電郵 Email counseling@methodist-centre.com

循道衛理銅鑼灣培訓中心 Methodist Causeway Bay Training Centre

地址 Address 香港銅鑼灣禮頓道119號公理堂大樓20樓
20/F, Congregational House, 119 Leighton Road, Causeway Bay, Hong Kong.
電話 Tel 2806 0062 傳真 Fax 2806 0980 電郵 Email cics@methodist-centre.com

循道衛理喜悅坊 Methodist Joy Centre

地址 Address 香港灣仔軒尼詩道36號循道衛理大廈10樓
10/F, Methodist House, 36 Hennessy Road, Wan Chai, Hong Kong.
電話 Tel 2527 2250 傳真 Fax 2865 2903 電郵 Email cics@methodist-centre.com
(2018年10月起提供服務 Service started from October 2018)

循道衛理康健坊 Methodist Wellness Centre

地址 Address 香港灣仔軒尼詩道36號循道衛理大廈13樓
13/F, Methodist House, 36 Hennessy Road, Wan Chai, Hong Kong.
電話 Tel 2527 2250 傳真 Fax 2865 2903 電郵 Email cics@methodist-centre.com
(2018年6月起提供服務 Service started from June 2018)

循道衛理中心柴灣辦事處及培訓中心 Methodist Centre Chai Wan Office & Training Centre

地址 Address 香港柴灣翠灣邨翠灣商場3A號舖地下、1樓及2樓
Shop Unit No. 3A at G/F, 1/F & 2/F, Tsui Wan Shopping Centre, Chai Wan, Hong Kong
電話 Tel 2527 2250 傳真 Fax 2865 2903 電郵 Email cics@methodist-centre.com
(2018年11月起提供服務 Service started from November 2018)

晴朗成長坊 Sunny Growth & Development Centre

地址 Address 香港灣仔軒尼詩道22號地庫
B1/F, 22 Hennessy Road, Wan Chai, Hong Kong.
電話 Tel 2520 4933 傳真 Fax 2865 2903 電郵 Email counseling@methodist-centre.com
(2018年7月起提供服務 Service started from July 2018)

兒童及家庭支援服務 Children and Family Support Service

地址 Address 香港灣仔軒尼詩道22號2樓
2/F, 22 Hennessy Road, Wan Chai, Hong Kong.
電話 Tel 2527 3027 傳真 Fax 3112 4349 電郵 Email ascs@methodist-centre.com

延伸教育服務 Continuing Education Service

延伸教育服務 Continuing Education Service

地址 Address 香港灣仔軒尼詩道22號3樓
3/F, 22 Hennessy Road, Wan Chai, Hong Kong.
電話 Tel 2527 2249 傳真 Fax 2527 3065 電郵 Email ces@methodist-centre.com

循道衛理樂藝坊 Methodist Art Centre

地址 Address 香港灣仔軒尼詩道36號循道衛理大廈12樓
12/F, Methodist House, 36 Hennessy Road, Wan Chai, Hong Kong.
電話 Tel 2527 2249 傳真 Fax 2527 3065 電郵 Email ces@methodist-centre.com
(2018年11月起提供服務 Service started from November 2018)

老人服務 Elderly Service

循道衛理灣仔長者服務中心 Wan Chai Methodist Centre for the Seniors

地址 Address 香港灣仔莊士敦道211號地下D舖、1樓及2樓
Shop D, G/F, 1F& 2/F, 211 Johnston Road, Wan Chai, Hong Kong.
電話 Tel 2527 4103 傳真 Fax 2834 2027 電郵 Email decc@methodist-centre.com

綜合家居照顧服務 Integrated Home Care Service Team

地址 Address 香港灣仔莊士敦道211號地下D舖、1樓及2樓
Shop D, G/F, 1F& 2/F, 211 Johnston Road, Wan Chai, Hong Kong.
電話 Tel 2527 4234 傳真 Fax 2834 2027 電郵 Email ihcst@methodist-centre.com

循道衛理修頓老人中心 Methodist Southorn Centre for the Elderly

地址 Address 香港灣仔軒尼詩道130號修頓中心5樓501室
Room 501, 5/F, Southorn Centre, 130 Hennessy Road, Wan Chai, Hong Kong.
電話 Tel 2838 6368 傳真 Fax 2891 5182 電郵 Email ec@methodist-centre.com

改善家居及社區照顧服務(港島區) Enhanced Home & Community Care Service (HK Cluster)

地址 Address 香港灣仔軒尼詩道22號4樓408室
Room 408, 4/F, 22 Hennessy Road, Wan Chai, Hong Kong.
電話 Tel 2527 2133 傳真 Fax 2527 2148 電郵 Email ehccs@methodist-centre.com

循道衛理健樂軒 Methodist Kin Lok Centre

地址 Address 香港筲箕灣愛東村愛善樓地下G03A室
Unit G03A, G/F, Oi Sin House, Oi Tung Estate, Shau Kei Wan, Hong Kong.
電話 Tel 2967 4983 傳真 Fax 2967 4773 電郵 Email kl@methodist-centre.com

離院長者綜合支援計劃 Integrated Discharge Support Program for Elderly Patients

地址 Address 香港柴灣樂民道3號東區尤德夫人那打素醫院綜合大樓A座12字樓1216室
Rm 1216, 12/F, Block A Integrated Building, Pamela Youde Nethersole Eastern Hospital, 3 Lok Man Road, Chai Wan, Hong Kong.
電話 Tel 2595 4465 傳真 Fax 2595 4450 電郵 Email icmpy@methodist-centre.com

地址 Address 香港灣仔皇后大道東266號律敦治醫院行政樓606室
Room 606, 6/F, Administration Block, Ruttonjee Hospital, 266 Queen's Road East, Wan Chai, Hong Kong.
電話 Tel 2291 1646 傳真 Fax 2575 7917 電郵 Email icmrh@methodist-centre.com

循道衛理社區照顧中心(東區) Methodist Community Care Centre (Eastern)

地址 Address 香港北角英皇道388號北港商業大廈3樓A室
Flat A, 3/F, North Cape Commercial Building, 388 King's Road, North Point, Hong Kong.
電話 Tel 2570 0311 傳真 Fax 2570 0191 電郵 Email mccc@methodist-centre.com

鳴謝 ACKNOWLEDGEMENTS

我們衷心感謝下列機構、團體及社會各界人士在過去一年對本會的慷慨捐助和支持。倘有錯漏，敬希見諒，並請聯絡我們。

We would like to express our most sincere thanks to the following donors and supporters for their generous help during the year 2017-2018. Should there be any missing, please accept our apologies and inform us.

個人 Individuals

Mr CHAN Lui	丘魏淑琴女士	區煒培先生	黃民麗女士
Ms CHU Ka Man	伍恩豪先生	梁國雄先生	黃梁明珠女士
Ms HUI Wai Yu, Catherina	余家興先生	許錦坤先生	黃暢堯先生
Ms WONG Po Ying, Helen	余蘭金女士	連麗珠女士	溫梓煥女士
Mr YU Kai Yuen	吳燕卿女士	陳志軒先生	歐植雲先生
林渤然先生、葉麗梅女士	林麗虹女士	陳周潤笑女士	蘇球先生
黎宏煥先生、江曉楓女士	范約翰先生	陳桂英女士	
王主愛女士	翁建林先生	陳堅強先生	
王樂熙女士	馬惠嫻女士	彭趙維萱女士	

商業機構 Corporate Organizations

Cosmo Hotel	SPS Building Consultants Ltd.	駿景巴士服務公司
Dorsett Mongkok, Hong Kong	To's Construction Co. Ltd.	潮發點心
Dorsett Wanchai, HongKong	金山工業(集團)有限公司	
Modern CPA	縱橫財經公關顧問(中國)有限公司	

教會及基督教團體 Churches & Christian Bodies

循道衛理聯合教會香港堂	循道衛理聯合教會北角衛理堂	循道衛理聯合教會鴨脷洲堂
-------------	---------------	--------------

學校及教育團體 Schools

中華基督教會基法小學(油塘)	軒尼詩道官立小學(銅鑼灣)	聖公會田灣始南小學
丹拿山循道學校	將軍澳循道衛理小學	聖公會置富始南小學
北角循道學校	深水埗官立小學	道教青松小學(湖景邨)
北角衛理堂幼兒園(炮台山)	循道中學	嘉諾撒培德學校
北角衛理堂幼稚園	循道學校	嘉諾撒聖心學校(私立部)
保良局陳南昌夫人小學	黃埔宣道小學	鯉魚門循道衛理幼稚園
炮台山循道衛理中學	筲箕灣循道衛理幼稚園	

政府部門 Government Departments

香港懲教署

年報工作小組

督印：黃民麗

編輯：伍志珊、葉韻如、張霆鋒、茹雅倩

出版日期：2018年12月

出版數量：300本




循道衛理中心
Methodist Centre

總辦事處 Head Office

地址 : 香港灣仔軒尼詩道22號
Address : 22 Hennessy Road, Wan Chai, Hong Kong
電話 Tel : 2527 2025
傳真 Fax : 2865 4966
電郵 Email : mc@methodist-centre.com
網址 Website : www.methodist-centre.com



循道衛理中心專頁 | 


使命·關愛
Mission & Care